



University College



Assessing the Processes and Outcomes of a Summer Bridge Program: Giving Students a Jump Start on Academic Success

Michele J. Hansen, Ph.D., Director of Assessment, University College
Gayle A. Williams, Ed.D., Assistant Dean, University College

Indiana University
Purdue University Indianapolis



Presentation Overview

- Summer Bridge at IUPUI (the Context)
- Summer Bridge theoretical framework
- Why assess
- How assess
- Examples of assessment results and improvements
- Discussion and next steps



IUPUI Context

- Large urban, commuter, public university
- Large number of under-prepared freshmen
- Over one-half of Fall beginning freshmen are first-generation college students (neither parent completed a four year college degree)
- Almost one-half of Fall beginning freshmen report that they plan to work more than 20 hours per week while attending school



University College

- Academic unit formed in 1997
- Houses numerous first-year programs
- Serves Over 8000 students



Essential Elements Of Summer Bridge

- Open to all students in specific majors
- Provides a collegiate-level curriculum
- Creates communities of entering students
- Offered free to participants



COMMUNITY around learning

- Uses the powerful elements of learning communities
- Builds strong peer connections
- Provides opportunities collaborative learning
- Emphasizes multi-disciplinary perspectives
- Incorporates positive interactions with faculty, advisors, and librarians

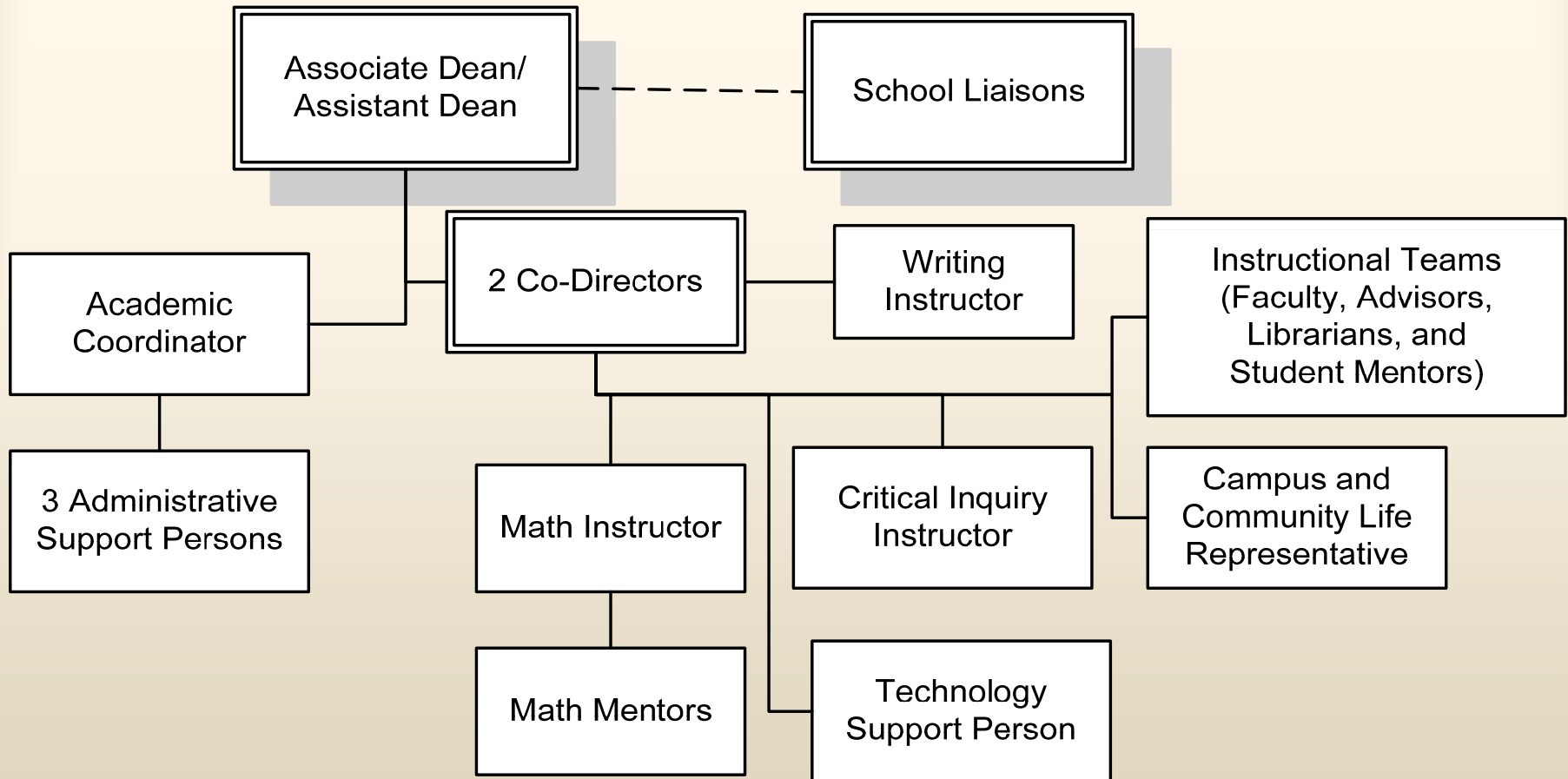
Instructional Teams



- Faculty
- Advisor
- Librarian
- Student Mentor



Organizational Chart



Participating Schools

Business
Education
Nursing
Science
University College

SUMMER ACADEMY
bridge
PROGRAM
A PROGRAM FOR ENTERING STUDENTS

IUPUI's Bridge Program is August 9-August 19
Register Today
Please contact us at (317)278-9673
or by email at ucbridge@iupui.edu

*IU School of Education
IU School of Nursing
IU School of Liberal Arts
School of Science
Kohlschater School of Business
University College*

Application Materials Inside!!

IUPUI



Learning Outcomes

- Develop a comprehensive perspective on higher education
- Develop a community of learners
- Develop communication skills
- Develop critical thinking skills
- Understand and use information technology
- Develop life skills to support academic goals
- Understand and use university resources

Curriculum

- Writing
- Math
- Communication Studies
- Critical thinking
- Transition skills
- Study skills
- Introduction to major



Why Assess Summer Bridge Program

- Demonstrate worth and value
- Learn about impacts and goal achievement
- Course development and improvement
- Obtain student feedback



How Assess Summer Bridge Program

- In-class focus groups
- Questionnaires administered at the end of semester to understand students' perceptions of course benefits and self-reported learning gains (including open-ended questions)
- Examine participants verses non-participants with regard to academic performance and retention while controlling for background differences
- Assess perceptions of instructional teams
- Student Journals to assess students' perceptions and learning gains over time



Assessment Processes

- Seek involvement of instructional teams in planning, implementation, and deployment
- Select outcome measures that are valid, reliable, aligned with course goals and learning outcomes
- Understand what course processes lead to particular outcomes: the why and the what
- Employ qualitative and quantitative methods
- Employ multiple measures from different sources
- Employ summative and formative approaches
- Take steps to ensure results are linked to planning and decisions



Assessment of Past Programs

- Summer 2001
 - 18 students completed the program
 - Overall Beginning Freshmen First Semester cumulative GPA = 2.11
 - Summer Academy students average GPA = 2.70
- Summer 2002
 - 79 students completed the program
 - Overall Beginning Freshmen First Semester cumulative GPA = 2.69
 - Summer Academy students GPA = 2.90



Impact of Participation in the Summer Academy Program for Beginning Freshmen 2003

| Summer Academy | N | Average Fall GPA | Adjusted Fall GPA |
|------------------|------|------------------|-------------------|
| Participants | 124 | 2.86 | 2.93 |
| Non-Participants | 1147 | 2.58 | 2.57 |
| Overall | 1271 | 2.61 | |



Impact of Participation in the Summer Academy Program for Beginning Freshmen 2003

| Summer Academy | N | Retn Rate | Adjusted Retn Rate |
|------------------|------|-----------|--------------------|
| Participants | 125 | 78% | 79% |
| Non-Participants | 1160 | 69% | 69% |
| Overall | 1285 | 70% | |



Impact of Participation in the Summer Academy Program for Beginning Freshmen 2004

| Summer Academy | N | Average Fall GPA | Adjusted Fall GPA |
|------------------|------|------------------|-------------------|
| Participants | 157 | 2.75 | 2.74 |
| Non-Participants | 1286 | 2.56 | 2.56 |
| Overall | 1443 | 2.58 | |



Fall 2004 Cumulative First Semester GPA By School

| Summer Academy Type | N | Average Fall GPA |
|---------------------|-----|------------------|
| Business | 41 | 2.61 |
| Education | 23 | 2.84 |
| Nursing | 41 | 3.11 |
| University College | 41 | 2.51 |
| Overall | 169 | 2.75 |



Characteristics of 2004 Students Participating in Summer Academy Program

| Summer Academy Participant | N | Avg. ACT Reading Score | Avg. H.S. Pctile Rank | Avg. SAT Score | % Conditional |
|----------------------------|------|------------------------|-----------------------|----------------|---------------|
| Yes | 172 | 86 | 63 | 999 | 30% |
| No | 2287 | 85 | 62 | 998 | 39% |



Characteristics of Fall 2004 Students Participating in First-Year Seminars

| Summer Academy Participant | % Female | % Afrn Amer | Avg. Age | DWF Rate |
|----------------------------|------------|-------------|-----------|------------|
| Yes | 66% | 5% | 18 | 17% |
| No | 58% | 11% | 20 | 23% |



Summer Academy Questionnaire

- Designed to assess self-reported learning outcomes
- Provides instructional teams with valuable feedback concerning students' perceptions of course benefits
- Reports display findings by instructional team and in the aggregate
- Actual comments from students



2004 Summer Academy Student Survey Results

Percentage of students who strongly agreed or agreed that participating in the Summer Academy helped improve their ability to...

| | |
|---|-----|
| Locate the appropriate campus resources | 84% |
| Establish an effective study schedule | 65% |
| Critically examine ideas and issues | 71% |
| Adjust to college life | 94% |
| Set priorities so I can accomplish what is most important to me | 80% |



2004 Summer Academy Student Survey Results

Percentage of students who strongly agreed or agreed that participating in the Summer Academy improved their understanding of...

| | |
|--|-----|
| Faculty expectations of students | 95% |
| My learning styles | 73% |
| Why I am attending college | 75% |
| Developed an appreciation of social and cultural diversity | 83% |
| Meeting demands and expectations of college | 83% |



2004 Summer Academy Student Survey Results



99% of students surveyed said they would recommend the Summer Academy Bridge program to other first-year students.

(n=162)



Improvements Implemented Based on Assessment Results

- Developing a more comprehensive method of recruiting minorities
- Altered math component
- Altered writing component
- Provided more free time for collaboration
- Created innovative curricular components
- Shortened team building/ice breaker activities



Next Steps And Discussion

- Continue employing qualitative and quantitative research as complimentary techniques
- Conduct analyses to determine what intervening variables are contributing to academic success (what about Bridge program most beneficial)
- Conduct retrospective interviews with participants to examine academic skill transfer and perceptions of course benefits over time



Contact Information

- Michele J. Hansen (mjhansen@iupui.edu)
- Gayle A. Williams (gawillia@iupui.edu)