

INDIANA UNIVERSITY



IUPUI Peer Institution Selection and Analysis

Presented to the Board of Trustees – April 7, 2006

University Planning, Institutional Research, & Accountability

Poplars 809

(812) 856-0850

upira@indiana.edu

IUPUI Peer Institution Selection and Analysis

Peer institutions for IUPUI were selected through a series of analyses and discussions between the IUPUI Chancellor's Cabinet and the Associate Vice President for University Planning, Institutional Research, and Accountability. The IUPUI Chancellor's Cabinet is comprised of the following individuals:

- Charles Bantz, IUPUI Chancellor and IU Executive Vice President
- Bill Plater, Executive Vice Chancellor and Dean of Faculties
- Trudy Banta, Vice Chancellor, Planning & Institutional Improvement
- Janice Froehlich, Interim Vice Chancellor for Research and Interim Associate Vice President for Research
- Bob Martin, Vice Chancellor for Administration and Finance
- Amy Warner, Interim Vice Chancellor for External Affairs
- Karen Whitney, Vice Chancellor for Student Life and Diversity
- Sherrée Wilson, Special Assistant to the Chancellor

The selected peer institutions are:

Temple University
University at Buffalo - SUNY
University of Alabama at Birmingham
University of Cincinnati
Univ. of Colorado at Denver & Health Sciences Center
University of Illinois at Chicago
University of Louisville
University of New Mexico
University of South Florida
University of Utah
Virginia Commonwealth University
Wayne State University

IUPUI also selected the following aspirational "20-year targets of excellence" reference group:

The Ohio State University
University of California-Los Angeles
University of Minnesota
University of Washington-Seattle

The remainder of this document describes briefly the analytic methods used to inform the ad hoc group's selection decisions, followed by a comparison of IUPUI with the peers across a range of measures. A glossary provided under separate cover contains more detailed descriptions of the various measures shown in the comparisons.

Analytic Method

The Chancellor's Cabinet had engaged in a related effort last year when the initial call for peer institutions was issued through the IU Mission Differentiation Project. The Associate Vice President for Planning, Institutional Research, and Accountability who was at that time the Associate Vice Chancellor for Information Management and Institutional Research at IUPUI, provided information and analysis to support the earlier effort and had developed further those methods for the current university-wide peer selection project.

Several initial analyses were presented to Chancellor's Cabinet staff as described more fully below and the interactive peer modeling tool was subsequently presented at a Cabinet meeting.

The Interactive Peer Model

The modeling analysis employed a hybrid threshold/distance methodology, wherein the target institution (IUPUI) was compared to all other institutions in the selection pool across a varied set of measures.

For each measure, ranges were defined according to the distribution of institutions around the IUPUI value. Percentile ranges were used to determine the cutoff points. Institutions within a 10 percentile range (+/- 5 percentile) were deemed most similar and assigned zero points. Institutions beyond percentile range but within 25 (+/- 12.5) percentile points were assigned 1 point. Point values increased for institutions less similar, from 3 to 10 to 25 for the next three concentric percentile ranges. The distance of an institution from IUPUI was determined by summing the assigned points across all measures.

Weights and Aspirational Values

The interactive model also allowed the user to weight any or all measures from zero (not included in the analysis) to an unlimited upper range. Various combinations were provided as examples.

The model also accommodated setting aspirational values for any or all of the measures. Peer listings generated using the aspirational values illustrated institutions that are closest to the aspirational profile thus created.

Peer Selection

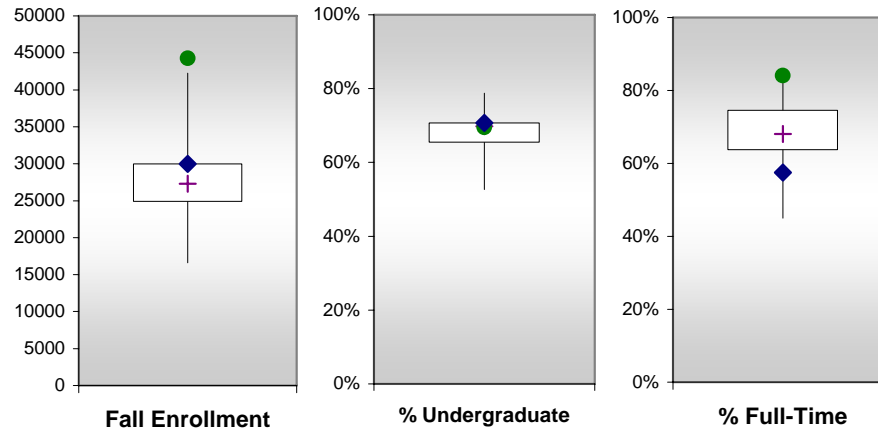
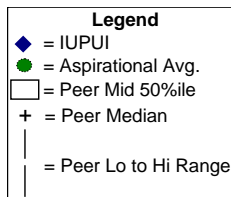
Based on the initial analyses and a face-to-face simulation meeting, the Chancellor and his staff selected a set of 12 institutions as a core peer group. In addition, they identified an aspirational reference group to monitor "20-year targets of excellence."

The remainder of this document compares IUPUI to the peer institutions across a wide range of measures. Each analysis also shows the values for the aspirational institutions, but those values are not included in any of the rankings or peer benchmark calculations.

Fall 2004 Enrollment

IUPUI has the fourth highest enrollment of the peer group, placing it at about the 75th percentile with the aspirational peers averaging about 50% higher in enrollment. The distribution of students by degree level is fairly homogeneous among the group with IUPUI just slightly above the average on percent of undergraduate students. IUPUI has a notably lower proportion of full-time students, with only two peers, UC Denver & Health Sciences Center and Wayne State University, having lower proportions.

	Fall 2004 Enrollment	Level		Course Load	
		Undergrad.	Grad/Prof.	Full-Time	Part-Time
Indiana University Purdue University Indianapolis	29,953	71%	29%	58%	42%
Rank among 12 Peers & IUPUI	(4)	(4)	(10)	(11)	(3)
Average of 12 Peers & IUPUI	27,084	68%	32%	68%	32%
Peer Institutions					
Temple University	33,551	70%	30%	75%	25%
University at Buffalo - SUNY	27,276	65%	35%	82%	18%
University of Alabama at Birmingham	16,693	69%	31%	67%	33%
University of Cincinnati-Main Campus	27,178	70%	30%	77%	23%
Univ. of Colorado at Denver & Health Sci Center	16,610	53%	47%	45%	55%
University of Illinois at Chicago	24,865	62%	38%	82%	18%
University of Louisville	20,729	72%	28%	70%	30%
University of New Mexico-Main Campus	26,242	70%	30%	68%	32%
University of South Florida	42,238	79%	21%	64%	36%
University of Utah	28,933	79%	21%	69%	31%
Virginia Commonwealth University	28,303	67%	33%	67%	33%
Wayne State University	32,386	64%	36%	54%	46%
20-Year Targets of Excellence Aspirational Institutions					
The Ohio State University	50,995	74%	26%	86%	14%
University of California-Los Angeles	35,966	69%	31%	96%	4%
University of Minnesota	50,954	64%	36%	70%	30%
University of Washington-Seattle	39,199	71%	29%	84%	16%
Average of Aspirational Peers	44,279	69%	31%	84%	16%

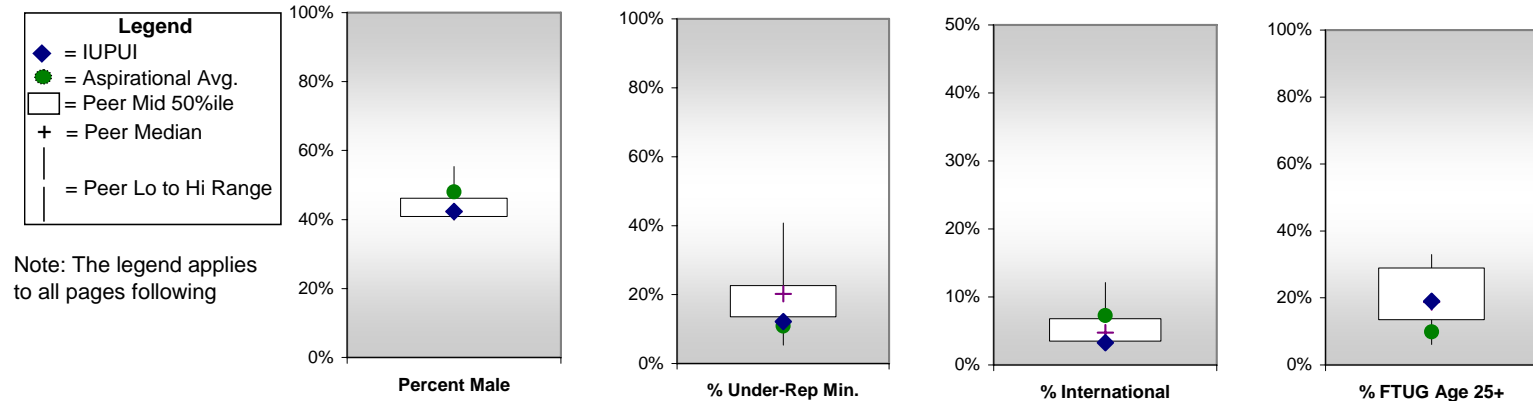


Student Profile Characteristics - Fall 2004*

IUPUI enrolls a notable majority of female students but is just above the midrange of its peers in the percentage of female students. Reflecting its service region, IUPUI is relatively low in proportional representation of ethnic minority students, both overall and among under-represented minorities (i.e., African Americans, Latinos, and Native Americans). IUPUI and its peers enroll primarily students who originate from their state with IUPUI enrolling the highest proportion of state residents. The aspirational institutions, and especially the University of Minnesota, enroll larger proportions of students from other states. Even among the more traditional full-time students, IUPUI and its peers enroll larger proportions of older students than is typical among the aspirational group.

	Gender		Race/Ethnicity/Citizenship Status			New FTIC	Full-Time Ugrad Age	
	Male	Female	Under-rep Min	Total Minority	International	State Res.	Average	Pct Age 25+
Indiana University Purdue University Indianapolis	42%	58%	12%	15%	3%	98%	22.0	19%
Rank among 12 Peers & IUPUI	(7)	(7)	(11)	(12)	(12)	(1)	(9)	(6)
Average of 12 Peers & IUPUI	45%	55%	21%	28%	6%	89%	23.2	21%
Peer Institutions								
Temple University	43%	57%	22%	32%	5%	71%	22.0	14%
University at Buffalo - SUNY	52%	48%	11%	19%	12%	92%	21.0	10%
University of Alabama at Birmingham	40%	60%	28%	32%	6%	91%	24.0	28%
University of Cincinnati-Main Campus	50%	50%	15%	18%	7%	91%	22.8	19%
Univ. of Colorado at Denver & Health Sci Center	41%	59%	17%	22%	3%	97%	24.2	32%
University of Illinois at Chicago	45%	55%	23%	44%	8%	97%	21.4	12%
University of Louisville	46%	54%	13%	16%	4%	87%	23.6	24%
University of New Mexico-Main Campus	42%	58%	41%	44%	3%	90%		
University of South Florida	40%	60%	22%	27%	5%	89%	24.7	6%
University of Utah	55%	45%	5%	10%	5%	79%	24.0	33%
Virginia Commonwealth University	40%	60%	20%	28%	3%	91%	23.0	18%
Wayne State University	41%	59%	32%	38%	8%	95%	25.0	33%
20-Year Targets of Excellence Aspirational Institutions								
The Ohio State University	51%	49%	10%	16%	8%	86%	21.1	8%
University of California-Los Angeles	46%	54%	19%	54%	7%	94%	21.0	7%
University of Minnesota	47%	53%	7%	15%	7%	66%	21.0	11%
University of Washington-Seattle	48%	52%	8%	31%	6%	82%	12.0	13%
Average of Aspirational Peers	48%	52%	11%	29%	7%	82%	18.8	10%

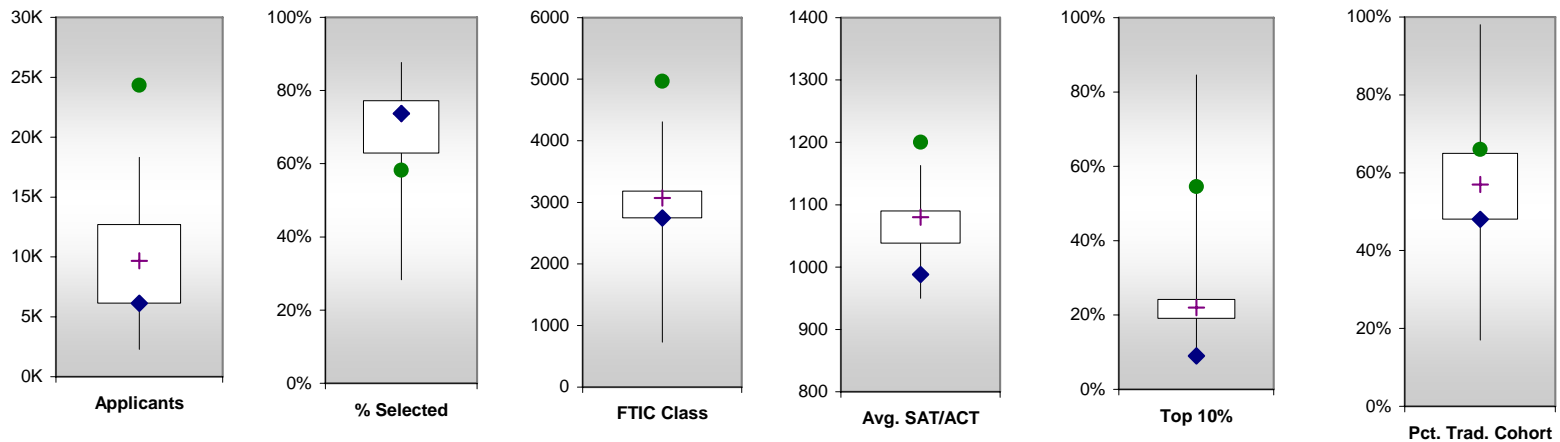
*All data except age are from IPEDS Fall 2004 Enrollment Sources. Age data are from the most recent Common Data Set posted by the institutions on their web sites, which is Fall 2004 for five of the institutions and Fall 2005 for all others.



Fall 2005 Undergraduate Admissions

IUPUI solicits relatively few applications compared to its peer group and admits a proportionally smaller class, resulting in a slightly higher than average selectivity rate among the peer group. The percent of applicants selected among the aspirational group is considerably lower. IUPUI admits a relatively small first-year class but has one of the highest yield rates, which is indicative of having an applicant pool with relatively few alternatives (i.e., a high percentage of place-bound students, dependent on financial aid, with lower average levels of academic preparation). Indicators of strength of academic background is notably low among IUPUI students, which has a commensurately low rate of students in the "traditional cohort" (i.e., entering as first-time, full-time, first year students as opposed to first-time, part-time or any transfer).

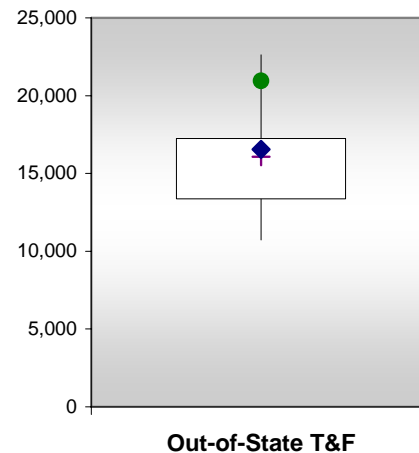
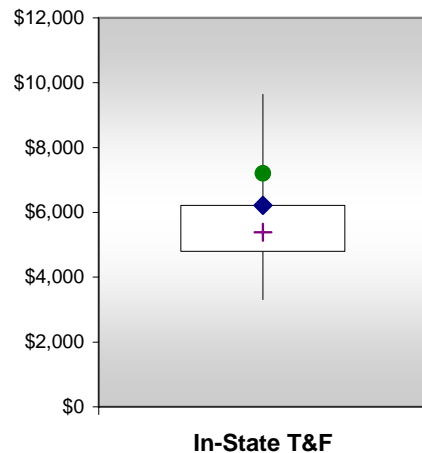
	First-Time Matriculant Admissions Activity					Avg. SAT/ ACT Equiv	Freshman Top 10%	% Trad. Cohort
	Applicants	Admits	% Selected	Enrolled	% Yield			
Indiana University Purdue University Indianapolis	6,136	4,525	74%	2,746	61%	988	9%	48%
Rank among 12 Peers & IUPUI	(10)	(10)	(6)	(10)	(2)	(12)	(13)	(10)
Average of 12 Peers & IUPUI	10,151	6,304	68%	2,848	48%	1071	27%	58%
Peer Institutions								
Temple University	16,681	10,518	63%	3,815	36%	1085	19%	57%
University at Buffalo - SUNY	18,207	10,187	56%	3,183	31%	1163	24%	64%
University of Alabama at Birmingham	4,255	3,731	88%	1,587	43%	1076	23%	51%
University of Cincinnati-Main Campus	11,124	8,589	77%	3,071	36%	1087	19%	98%
Univ. of Colorado at Denver & Health Sci Center	2,291	1,639	72%	729	44%	1038	17%	17%
University of Illinois at Chicago	12,692	7,418	58%	2,776	37%	1080	24%	65%
University of Louisville	5,335	4,325	81%	2,358	55%	1094	22%	68%
University of New Mexico-Main Campus	7,134	5,254	74%	3,095	59%	1024	21%	72%
University of South Florida	18,321	5,186	28%	4,305	83%	1112	85%	53%
University of Utah	6,251	5,403	86%	2,769	51%	1090	27%	47%
Virginia Commonwealth University	9,836	7,315	74%	3,364	46%	1052	16%	57%
Wayne State University	9,680	6,083	63%	3,120	51%	950	25%	45%
20-Year Targets of Excellence Aspirational Institutions								
The Ohio State University	17,636	12,957	73%	5,954	46%	1164	39%	75%
University of California-Los Angeles	43,267	9,949	23%	3,723	37%	1273	97%	54%
University of Minnesota	20,460	14,259	70%	5,295	37%	1172	31%	59%
University of Washington-Seattle	15,955	10,694	67%	4,893	46%	1191	51%	76%
Average of Aspirational Peers	24,330	11,965	58%	4,966	42%	1200	55%	66%



First-Time Undergraduate Student Charges Academic Year 2005-06

IUPUI's tuition and required fees, for both in-state and out-of-state students, is above the average among the peer group but well below the rates for the aspirational institutions.

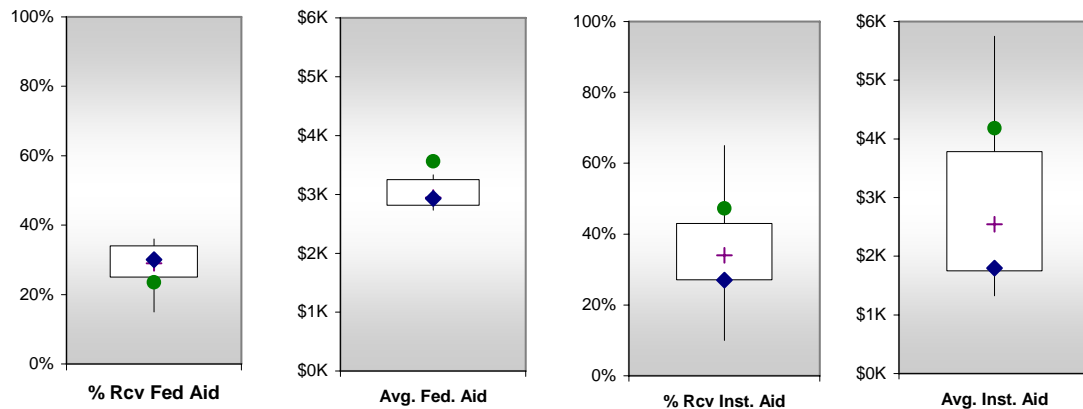
	In-State			Out-of-State		
	Tuition	Req. Fees	Total	Tuition	Req. Fees	Total
Indiana University Purdue University Indianapolis	\$5,625	\$594	\$6,219	\$15,953	\$594	\$16,547
Rank among 12 Peers & IUPUI	(4)	(11)	(4)	(4)	(11)	(5)
Average of 12 Peers & IUPUI	4,879	1,014	5,893	14,465	1,075	15,539
Peer Institutions						
Temple University	\$9,140	\$500	\$9,640	\$16,736	\$500	\$17,236
University at Buffalo - SUNY	4,350	1,718	6,068	10,610	1,718	12,328
University of Alabama at Birmingham	3,960	832	4,792	9,900	832	10,732
University of Cincinnati-Main Campus	7,452	1,425	8,877	21,204	1,425	22,629
Univ. of Colorado at Denver & Health Sci Center	4,224	797	5,021	15,394	797	16,191
University of Illinois at Chicago	6,194	2,304	8,498	18,584	2,304	20,888
University of Louisville	5,532	-	5,532	15,092	-	15,092
University of New Mexico-Main Campus	3,360	748	4,108	12,689	748	13,437
University of South Florida	2,147	1,163	3,310	14,305	1,771	16,076
University of Utah	3,628	648	4,276	12,702	648	13,350
Virginia Commonwealth University	4,012	1,373	5,385	15,947	1,493	17,440
Wayne State University	4,546	663	5,209	10,411	663	11,074
20-Year Targets of Excellence Aspirational Institutions						
The Ohio State University	\$7,509	\$573	\$8,082	\$18,732	\$573	\$19,305
University of California-Los Angeles	-	6,504	6,504	17,304	7,020	24,324
University of Minnesota	7,140	1,482	8,622	18,770	1,482	20,252
University of Washington-Seattle	5,103	507	5,610	19,400	507	19,907
Average of Aspirational Peers	\$4,938	\$2,267	\$7,205	\$18,552	\$2,396	\$20,947



First-Time, First-Year Undergraduate Student Aid (FY2003-04)

The percent of students receiving federal financial aid is a proxy indicator for the percentage of low income students, albeit likely an underestimate due to the notable proportion of students (typically one-third) who do not apply for aid. The proportion of IUPUI students receiving federal aid is at the mid range of its peer group. The aspirational institutions, with the notable exception of UCLA, appear to enroll fewer low-income students. IUPUI has a relatively low proportion of students receiving institutional aid relative to its peers and especially to the aspirational group. The average amount of federal and institutional aid received is partly related to student costs; the low average amount of institutional aid received by IUPUI students suggests that fewer resources are applied to institutional aid at IUPUI compared to the majority of its peers and all aspirational institutions.

	Federal Aid		Institutional Aid	
	% Receiving	Avg. Amount	% Receiving	Avg. Amount
Indiana University Purdue University Indianapolis	30%	\$2,930	27%	\$1,797
Rank among 12 Peers & IUPUI	6	(8)	10	(9)
Average of 12 Peers & IUPUI	29%	3,010	37%	3,037
Peer Institutions				
Temple University	36%	2,804	65%	3,732
University at Buffalo - SUNY	34%	2,733	20%	2,542
University of Alabama at Birmingham	36%	3,250	27%	4,335
University of Cincinnati-Main Campus	27%	3,302	34%	4,189
Univ. of Colorado at Denver & Health Sci Center	23%	3,017	10%	1,689
University of Illinois at Chicago	33%	2,958	40%	2,459
University of Louisville	22%	2,913	44%	5,749
University of New Mexico-Main Campus	29%	2,762	60%	1,324
University of South Florida	25%	2,950	43%	1,492
University of Utah	15%	2,814	28%	3,404
Virginia Commonwealth University	29%	3,333	34%	1,745
Wayne State University	35%	3,282	42%	3,782
20-Year Targets of Excellence Aspirational Institutions				
The Ohio State University	20%	2,844	77%	3,907
University of California-Los Angeles	33%	3,379	54%	5,054
University of Minnesota	21%	4,564	27%	5,272
University of Washington-Seattle	20%	3,459	31%	2,497
Average of Aspirational Peers	24%	3,562	47%	4,183



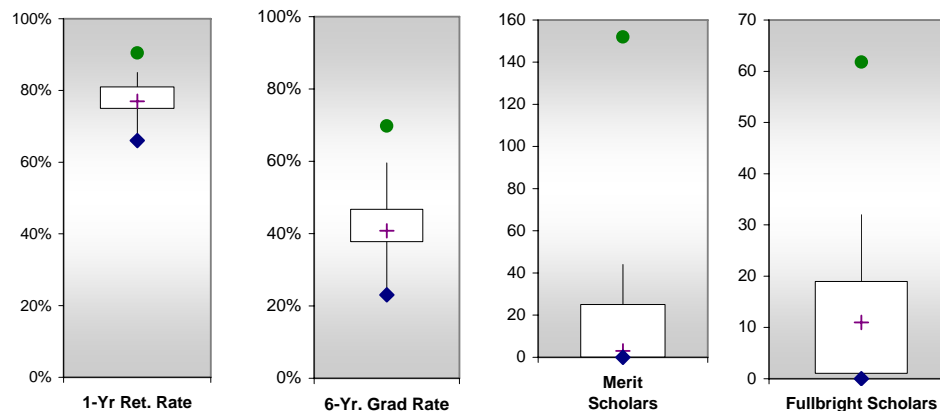
Student Progress and Achievement*

IUPUI has the lowest retention and graduation rates among its peers, primarily associated with its legacy as an open access, commuter institution. Recent increases in admissions selectivity associated with the development of the Community College of Indiana have led to notable increases in retention which should soon be reflected in the time-lagged graduation rate measure. However, IUPUI still has far to go to attain levels more typical of its peers. The aspirational institutions have even higher rates.

IUPUI has not yet entered the realm of attracting merit scholars nor having students attain Fulbright awards. A few of IUPUI's peers have more substantial track records on these measures but they are not close in volume to any of the aspirational institutions.

	One-Year Ret. Rate	Six-Year Grad. Rate	National Merit Schols.	Student Fulbrights
Indiana University Purdue University Indianapolis	66%	23%	0	0
Rank among 12 Peers & IUPUI	13	13	10	(11)
Average of 12 Peers & IUPUI	78%	43%	14	12
Peer Institutions				
Temple University	85%	54%	1	19
University at Buffalo - SUNY	84%	60%	0	26
University of Alabama at Birmingham	77%	38%	8	4
University of Cincinnati-Main Campus	77%	41%	25	19
Univ. of Colorado at Denver & Health Sci Center	69%	39%	0	0
University of Illinois at Chicago	77%	45%	4	32
University of Louisville	76%	33%	41	12
University of New Mexico-Main Campus	75%	40%	3	16
University of South Florida	81%	47%	44	1
University of Utah	85%	48%	39	11
Virginia Commonwealth University	79%	41%	0	1
Wayne State University	74%	32%	3	0
20-Year Targets of Excellence Aspirational Institutions				
The Ohio State University	88%	62%	196	38
University of California-Los Angeles	96%	87%	228	105
University of Minnesota	86%	56%	110	44
University of Washington-Seattle	92%	73%	74	60
Average of Aspirational Peers	91%	70%	152	62

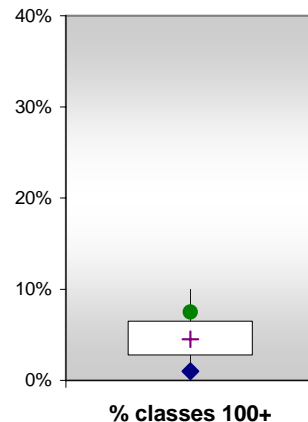
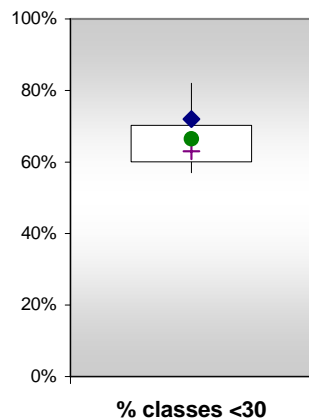
*The one-year retention rate is for the Fall 2003 traditional cohort (FT, FTIC); the six-year rate is for the Fall 1998 traditional cohort. National merit scholars are those who enrolled as first-time students in Fall 2004 or Fall 2005. Student Fulbrights are those awarded academic years 2000-01 through 2005-06.



Class Size - Academic Year 2004-05

IUPUI has the second highest proportion of small classes (fewer than 30 students) and one of the lowest proportion of large classes (100+ students) among its peers. The proportion of small classes is relatively similar among the peers and the aspirational group but the aspirational group tends to have more larger classes. However, a few of the peers, such as South Florida, SUNY Buffalo and University of Illinois-Chicago have notable proportions of large classes.

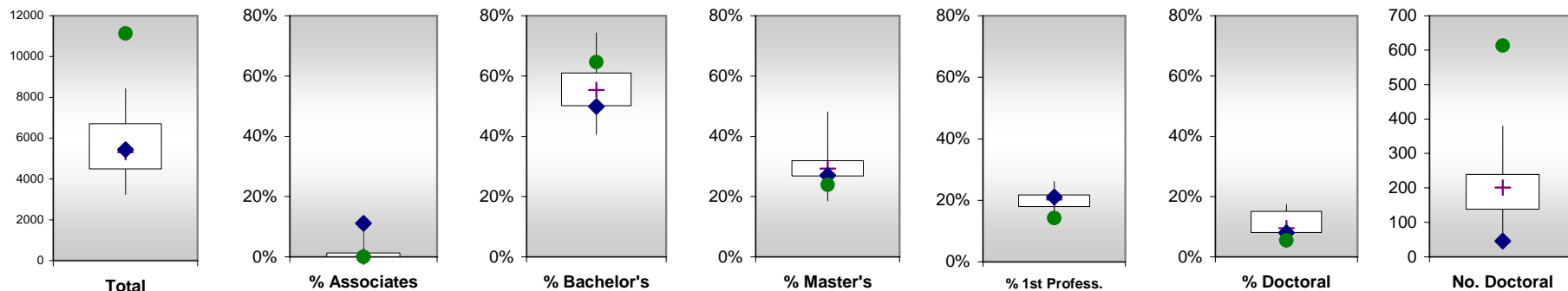
	% classes with less than 30 Students	% classes with 100+ Students
Indiana University Purdue University Indianapolis	72%	1%
Rank among 12 Peers & IUPUI	(2)	(11)
Average of 12 Peers & IUPUI	65%	5%
Peer Institutions		
Temple University	62%	3%
University at Buffalo - SUNY	60%	8%
University of Alabama at Birmingham	57%	5%
University of Cincinnati-Main Campus	82%	2%
Univ. of Colorado at Denver & Health Sci Center	64%	0%
University of Illinois at Chicago	68%	8%
University of Louisville	62%	4%
University of New Mexico-Main Campus	71%	4%
University of South Florida	60%	10%
University of Utah	57%	6%
Virginia Commonwealth University	70%	6%
Wayne State University		
20-Year Targets of Excellence Aspirational Institutions		
The Ohio State University	66%	6%
University of California-Los Angeles	67%	11%
University of Minnesota	69%	6%
University of Washington-Seattle	64%	7%
Average of Aspirational Peers	67%	8%



Degrees Conferred, 2004-05, by Level

The total number of degrees conferred annually by IUPUI is within the midrange of its peers. However, IUPUI is unique in the large number and proportion of associate's degrees, the relatively large number of first professional degrees (i.e., medicine, dentistry, and law) and the very low number of doctoral degrees conferred. IUPUI is below average among its peers in the proportion of bachelor's and master's degrees conferred. The aspirational institutions are notably high in the proportion of bachelor's degrees conferred and the number of doctoral degrees conferred.

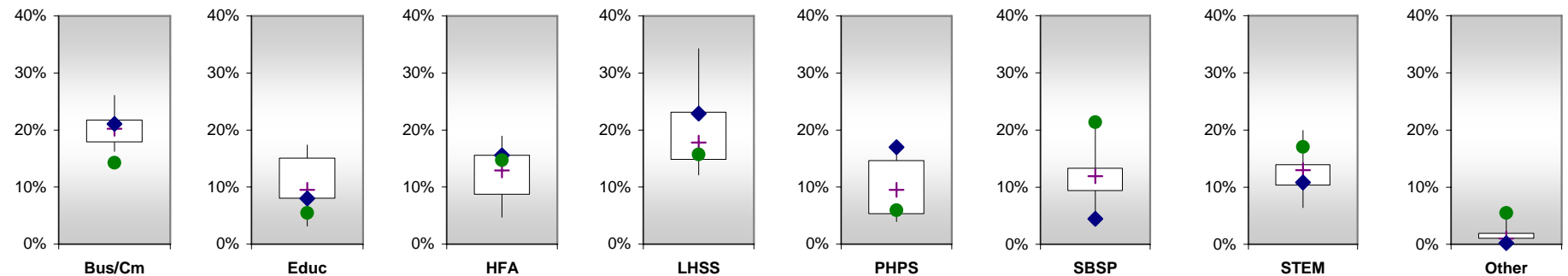
	Number Conferred						Percent Distribution				
	Total	Associate	Bachelor's	Master's	First Prof.	Doctoral	Associate	Bachelor's	Master's	First Prof.	Doctoral
Indiana University Purdue University Indianapolis	5,440	603	2,713	1,469	609	46	11%	50%	27%	11%	1%
Rank among 12 Peers & IUPUI	(6)	(1)	(8)	(7)	(2)	(13)	(1)	(11)	(9)	(2)	(13)
Average of 12 Peers & IUPUI	5,434	43	3,168	1,625	381	216	1%	57%	31%	7%	4%
Peer Institutions											
Temple University	6,991	8	4,263	1,601	797	322	0%	61%	23%	11%	5%
University at Buffalo - SUNY	6,705	4	3,674	2,094	553	380	0%	55%	31%	8%	6%
University of Alabama at Birmingham	3,241	0	1,622	1,223	258	138	0%	50%	38%	8%	4%
University of Cincinnati-Main Campus	5,094	202	2,938	1,381	334	239	4%	58%	27%	7%	5%
Univ. of Colorado at Denver & Health Sci Center	3,814	0	1,551	1,834	314	115	0%	41%	48%	8%	3%
University of Illinois at Chicago	5,723	0	3,149	1,785	503	286	0%	55%	31%	9%	5%
University of Louisville	3,878	48	2,148	1,237	333	112	1%	55%	32%	9%	3%
University of New Mexico-Main Campus	4,481	11	2,818	1,197	250	205	0%	63%	27%	6%	5%
University of South Florida	8,419	248	5,705	2,174	98	194	3%	68%	26%	1%	2%
University of Utah	6,997	0	5,198	1,303	267	229	0%	74%	19%	4%	3%
Virginia Commonwealth University	4,541	0	2,659	1,328	353	201	0%	59%	29%	8%	4%
Wayne State University	5,322	0	2,293	2,347	509	173	0%	43%	44%	10%	3%
20-Year Targets of Excellence Aspirational Institutions											
The Ohio State University	12,241	0	8,124	2,685	842	590	0%	66%	22%	7%	5%
University of California-Los Angeles	11,106	0	7,336	2,545	568	657	0%	66%	23%	5%	6%
University of Minnesota	10,341	0	6,088	2,798	777	678	0%	59%	27%	8%	7%
University of Washington-Seattle	10,850	0	7,287	2,560	475	528	0%	67%	24%	4%	5%
Average of Aspirational Peers	11,135	0	7,209	2,647	666	613	0%	65%	24%	6%	6%



Degrees Conferred, 2004-05, by Program Area

Given that all IUPUI peers have substantial health programs, including a medical school, the high proportion of degrees conferred in Life & Health Sciences and Services is not surprising. However, IUPUI is relatively high even within this peer group. Although lower in proportion, IUPUI has the highest proportion of degrees in the Public and Human Professions and Services, which includes all programs in SPEA and the School of Social Work. Business and Communication degrees are consistently popular at all campuses. IUPUI confers relatively small proportions of degrees in the Social & Behavioral Sciences/Psychology as well as in the STEM fields. The aspirational institutions are relatively high in these two areas, as well as in "Other" degrees, which include agriculture, home economics, and other programs typically found at land grant universities.

	Business/ Communication	Education	Humanities & Fine Arts	Life & Health Science & Svcs	Public & Human Prof./Svcs.	Soc & Beh Sci & Psych	Science, Tech, Engr. & Math	Other
Indiana University Purdue University Indianapolis	21%	8%	16%	23%	17%	4%	11%	0%
Rank among 12 Peers & IUPUI	(6)	(10)	(4)	(5)	(1)	(13)	(9)	(12)
Average of 12 Peers & IUPUI	20%	11%	12%	19%	10%	13%	13%	2%
Peer Institutions								
Temple University	24%	12%	13%	18%	15%	11%	6%	2%
University at Buffalo - SUNY	21%	6%	14%	14%	9%	16%	20%	1%
University of Alabama at Birmingham	20%	17%	5%	34%	4%	9%	9%	1%
University of Cincinnati-Main Campus	18%	9%	17%	15%	10%	9%	20%	2%
Univ. of Colorado at Denver & Health Sci Center	26%	9%	9%	23%	5%	13%	13%	1%
University of Illinois at Chicago	20%	8%	7%	27%	9%	12%	16%	1%
University of Louisville	19%	15%	9%	16%	16%	13%	12%	0%
University of New Mexico-Main Campus	16%	17%	18%	17%	5%	12%	14%	2%
University of South Florida	24%	15%	13%	14%	4%	19%	10%	1%
University of Utah	22%	3%	13%	12%	10%	22%	14%	5%
Virginia Commonwealth University	16%	8%	19%	26%	11%	11%	8%	1%
Wayne State University	17%	17%	8%	18%	16%	8%	14%	2%
20-Year Targets of Excellence Aspirational Institutions								
The Ohio State University	18%	8%	10%	16%	5%	16%	15%	12%
University of California-Los Angeles	8%	3%	18%	15%	5%	33%	18%	1%
University of Minnesota	15%	8%	14%	17%	7%	15%	19%	6%
University of Washington-Seattle	16%	3%	17%	15%	8%	21%	18%	4%
Average of Aspirational Peers	14%	5%	15%	16%	6%	21%	17%	5%

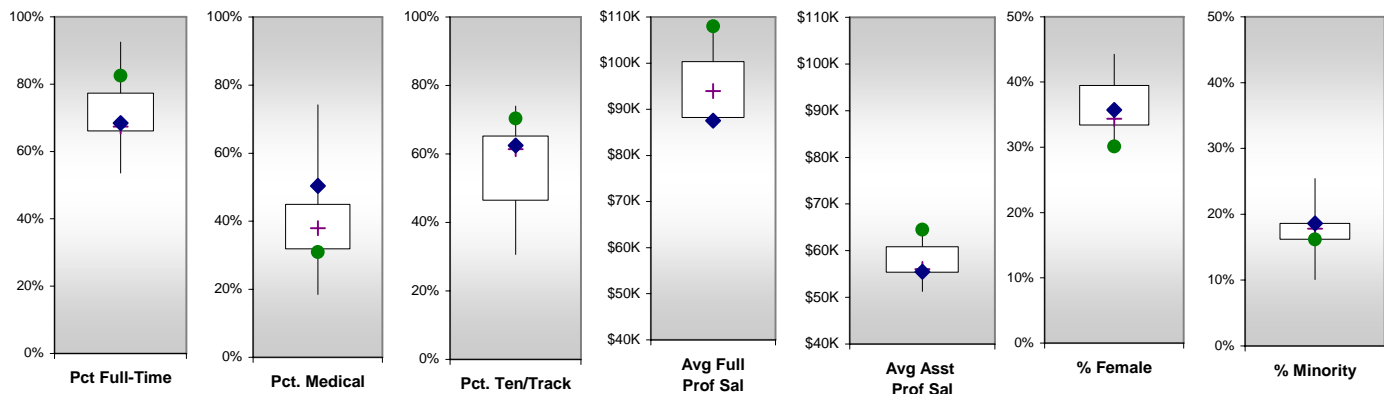


Faculty Profile*

Commensurate with its relatively large enrollment, and a large medical school, IUPUI ranks fourth among the peer group in the number of full-time faculty. IUPUI is just below average in the percent of its faculty who are full-time. Conversely, a slightly larger proportion of part-time faculty than is average among its peer group. Exactly half of IUPUI's full-time faculty are affiliated with the medical school, placing it as the third highest proportion among its peers. Average faculty salaries are relatively low, especially among full-time faculty, where they are second lowest among the peers. Slightly more than one-third of IUPUI's full-time faculty are female, which is average among its peers. IUPUI has a relatively high proportion of minority faculty, however, when Asian American faculty are excluded, IUPUI employs a below average percentage of minority faculty. The aspirational institutions generally have 50% more full-time faculty and notably lower percentages of part-time faculty. Salaries are generally higher at the aspirational institutions and the percentage of female and minority faculty are generally lower, with the exception of UCLA, which has a very large percentage of Asian American faculty (17%).

	Percent Full-Time	Full-Time Faculty								
		Total	Percent Medical	Percent Ten/Track	Avg. Full Prof. Sal.	Avg Asst Prof Sal.	Percent Female	Percent Minority	Pct. Urep Minority	
Indiana University Purdue University Indianapolis	68%	2,075	50%	62%	\$87,536	\$55,492	36%	19%	7%	
Rank among 12 Peers & IUPUI	(6)	(4)	(3)	(5)	(12)	(9)	(6)	(4)	(11)	
Average of 12 Peers & IUPUI	72%	2,187	39%	56%	96,400	57,896	36%	18%	8%	
Peer Institutions										
Temple University	54%	1,655	25%	61%	\$109,303	\$62,891	34%	19%	9%	
University at Buffalo - SUNY	66%	1,527	29%	74%	107,696	61,439	29%	19%	8%	
University of Alabama at Birmingham	91%	1,945	56%	62%	97,397	55,525	31%	17%	7%	
University of Cincinnati-Main Campus	65%	1,996	45%	65%	91,405	53,240	32%	16%	6%	
Univ. of Colorado at Denver & Health Sci Center	77%	3,091	74%	42%	100,355	65,156	44%	16%	11%	
University of Illinois at Chicago	66%	2,010	32%	65%	102,610	60,829	36%	25%	9%	
University of Louisville	72%	1,498	42%	68%	88,147	51,262	33%	18%	8%	
University of New Mexico-Main Campus	67%	1,778	32%	59%	87,844	56,053	40%	18%	12%	
University of South Florida	92%	4,117	18%	31%	86,850	53,813	42%	18%	9%	
University of Utah	89%	2,902	38%	46%	93,982	58,702	34%	10%	3%	
Virginia Commonwealth University	66%	1,960	37%	46%	92,933	55,336	39%	16%	8%	
Wayne State University	64%	1,759	43%	58%	98,273	60,505	33%	23%	10%	
20-Year Targets of Excellence Aspirational Institutions										
The Ohio State University	76%	3,054	23%	91%	\$108,426	\$64,781	29%	14%	6%	
University of California-Los Angeles	77%	2,604	37%	64%	122,309	66,970	28%	25%	8%	
University of Minnesota	87%	2,950	27%	83%	105,367	62,528	28%	13%	4%	
University of Washington-Seattle	90%	3,983	38%	44%	95,869	63,689	35%	13%	4%	
Average of Aspirational Peers	83%	3,148	31%	70%	\$107,993	\$64,492	30%	16%	6%	

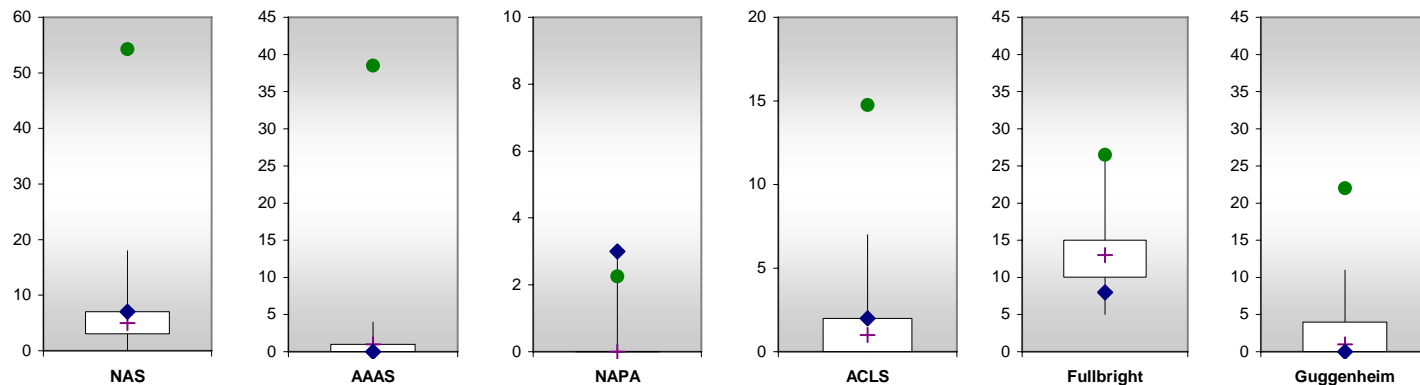
*Data for total, percent medical, percent tenure/tenure track, and salaries come from Fall 2004 IPEDS sources. Gender and minority data come from Fall 2003 IPEDS sources.



Select Faculty Awards and Recognitions

Relative to its peer group, IUPUI has a higher than average number of current active members in the National Academies, which includes the National Academy of Sciences, the National Academy of Engineering, and the Institute of Medicine. Neither IUPUI nor its peers have many members in the American Academy of Arts & Sciences. IUPUI's three members of the National Academy of Public Administration ranks high among the peer institutions as well as the aspirational group. The two faculty who obtained American Council of Learned Societies Fellowships since 1995 place IUPUI second amongst the peers but far below the aspirational institutions, which averaged 15. Fulbright Fellowships obtained by nine IUPUI faculty place it second to lowest among its peer group, which averages 14 and far below the 27 averaged by the aspirational group. IUPUI and four of its peers have had no Guggenheim recipients. Only three peers have more than 3 award winners since 1995. The number of Guggenheims received at aspirational institutions varies widely.

	Current Active Memberships			Fellowships Awarded Since 1995		
	National Academies (Sciences, Engr, Med)	American Academy of Arts & Sciences	National Academy of Public Administration	American Council of Learned Societies	Fulbright	Guggenheim
Indiana University Purdue University Indianapolis	7	0	3	2	8	0
Rank among 12 Peers & IUPUI	(3)	(8)	(1)	(4)	(12)	(10)
Average of 12 Peers & IUPUI	6	1	0	2	14	3
Peer Institutions						
Temple University	0	0	0	1	12	2
University at Buffalo - SUNY	5	2	0	7	17	4
University of Alabama at Birmingham	7	0	0	0	5	0
University of Cincinnati-Main Campus	6	1	0	3	13	1
Univ. of Colorado at Denver & Health Sci Center	12	0	1	1	10	4
University of Illinois at Chicago	5	1	0	3	26	7
University of Louisville	1	0	0	0	10	0
University of New Mexico-Main Campus	3	1	0	2	20	1
University of South Florida	2	0	0	0	15	0
University of Utah	18	4	0	1	15	11
Virginia Commonwealth University	4	1	3	0	11	2
Wayne State University	4	1	0	0	15	1
20-Year Targets of Excellence Aspirational Institutions						
The Ohio State University	22	7	1	15	35	14
University of California-Los Angeles	72	78	1	24	22	47
University of Minnesota	37	25	4	5	23	6
University of Washington-Seattle	86	44	3	15	26	21
Average of Aspirational Peers	54	39	2	15	27	22

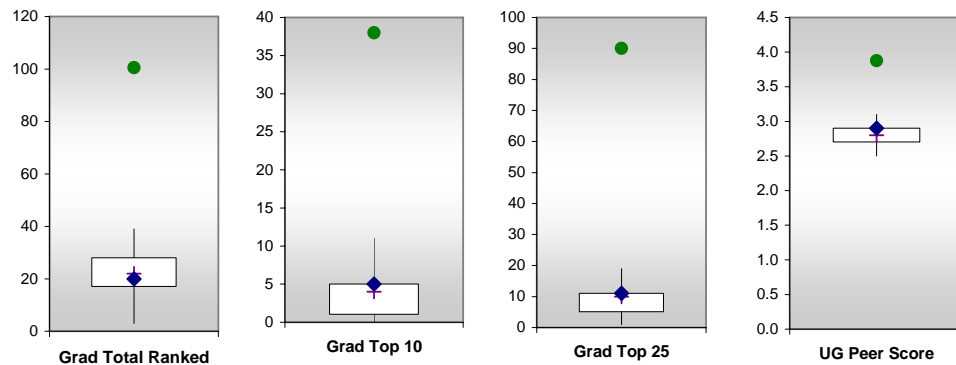


U.S. News & World Report Rankings

Since 2003, the U.S. News & World Report graduate program rankings have included 36 general graduate program areas (e.g., Law, Business, Education, Chemistry, etc.) and 142 sub-program areas (e.g., Dispute Resolution (Law), Accounting (Business), Administration/Supervision (Education), Analytic Chemistry, etc.). The graduate program rankings below indicate how many times each institution appears in any of the 178 total ranking lists (total) or ranked in the Top 10 or Top 25 of any of those lists (which vary considerably in total number). The 20 IUPUI graduate programs that appear in these rankings is fairly typical of the number among its peers, although IUPUI is over-represented in the Top 10 and Top 25 categories. The aspirational institutions, however, have between five and ten times as many programs appearing in these rankings.

IUPUI ranks in Tier 4 of the general (undergraduate) best college rankings along with four of its peers, while six peers are ranked in Tier 3 and two in the second tier. IUPUI's peer score academic ranking measure is relatively high among the peers. The reputational rankings of the aspirational institutions are notably higher than all of the peers.

	Ranked Graduate Programs			Undergraduate	
	Total	Top 10	Top 25	Tier	Peer Score
Indiana University Purdue University Indianapolis	20	5	11	4	2.9
Rank among 12 Peers & IUPUI	(8)	(3)	(4)	na	(4)
Average of 12 Peers & IUPUI	22	3	8	na	2.8
Peer Institutions					
Temple University	25	5	10	3	2.9
University at Buffalo - SUNY	28	1	5	2	3.1
University of Alabama at Birmingham	22	3	12	3	2.8
University of Cincinnati-Main Campus	22	4	5	3	2.7
Univ. of Colorado at Denver & Health Sci Center	13	4	7	4	2.8
University of Illinois at Chicago	39	11	19	3	3.0
University of Louisville	8	0	1	4	2.6
University of New Mexico-Main Campus	30	5	11	3	2.9
University of South Florida	3	0	1	4	2.5
University of Utah	37	2	11	2	3.1
Virginia Commonwealth University	18	6	12	3	2.8
Wayne State University	17	0	3	4	2.7
20-Year Targets of Excellence Aspirational Institutions					
The Ohio State University	77	19	58	1	3.6
University of California-Los Angeles	122	58	120	1	4.3
University of Minnesota	92	25	82	2	3.7
University of Washington-Seattle	111	50	100	2	3.9
Average of Aspirational Peers	101	38	90	na	3.9

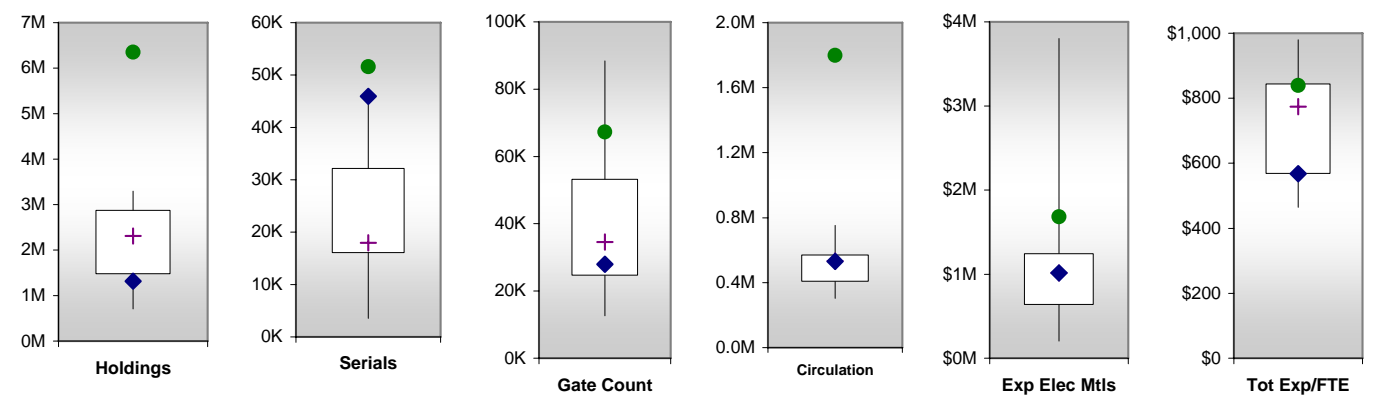


Library Comparisons - Fiscal Year 2002

IUPUI's library, which is relatively new and oriented toward digital collections, has a relatively small number of physical holdings. However, it does have a large number of current serials compared to its peers (and is even close to the average for the aspirational group). Given its large focus on digital holdings, the relatively low gate count and circulation transactions is not surprising. However, expenditures for electronic materials are only average among the peer group with two institutions, Wayne State and Cincinnati, having about triple the electronic expenditure budget. IUPUI's total library expenditures per FTE student is also relatively low among its peer group, ranking 10th among the 13 institutions. The aspirational institutions are particularly high in holdings, serials, and circulation compared to IUPUI and its peers.

IUPUI Peer Analysis - Library Comparisons

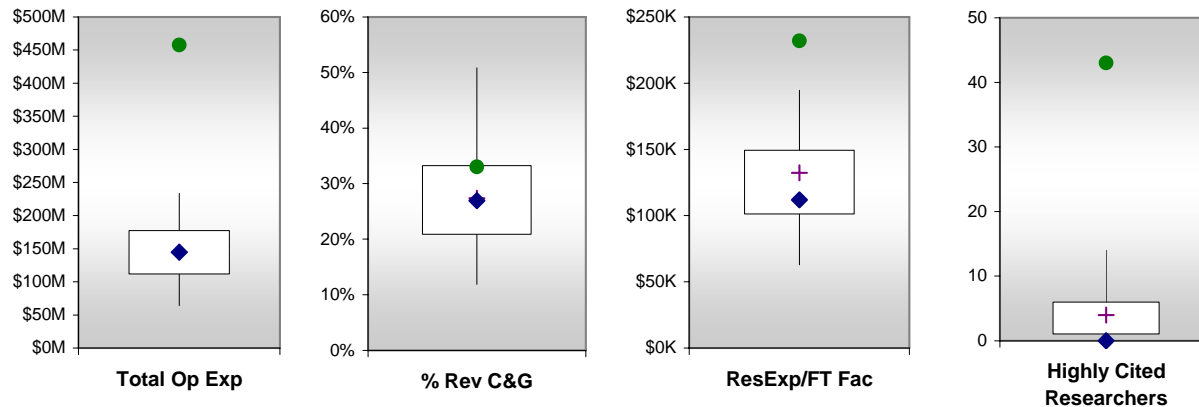
	Library Holdings	Current Serials	Gate Count Per Week	Circulation Transactions	Expenditures Elect Mat'ls	Total Lib Exp/FTE
Indiana University Purdue University Indianapolis	1.3M	45,918	27,967	530,879	1,013,712	\$568
Rank among 12 Peers & IUPUI	(11)	(1)	(9)	(7)	(7)	(10)
Average of 12 Peers & IUPUI	2.3M	19,550	39,617	504,400	1,279,469	763
Peer Institutions						
Temple University	2.8M	17,940	53,219	304,173	994,208	\$524
University at Buffalo - SUNY	3.3M	32,179	12,600	na	1,196,690	774
University of Alabama at Birmingham	1.2M	3,538	14,319	432,433	529,932	755
University of Cincinnati-Main Campus	2.9M	34,615	20,000	550,664	3,800,785	844
Univ. of Colorado at Denver & Health Sci Center	0.7M	3,753	24,682	629,666	205,399	769
University of Illinois at Chicago	2.3M	26,386	34,566	512,357	1,400,707	781
University of Louisville	1.8M	16,028	40,500	543,954	1,242,252	980
University of New Mexico-Main Campus	2.5M	17,637	33,012	751,596	697,176	967
University of South Florida	2.3M	16,470	88,360	533,544	1,191,101	503
University of Utah	3.0M	33,517	39,686	643,934	637,625	950
Virginia Commonwealth University	1.5M	13,886	57,984	311,526	548,833	465
Wayne State University	3.3M	18,645	56,471	334,555	2,908,920	841
20-Year Targets of Excellence Aspirational Institutions						
The Ohio State University	5.6M	43,086	50,696	2,273,228	2,761,338	\$619
University of California-Los Angeles	7.4M	79,552	89,092	1,928,758	na	1,027
University of Minnesota	6.1M	38,121	41,548	753,102	1,090,648	820
University of Washington-Seattle	6.3M	45,587	87,877	2,241,080	1,195,182	890
Average of Aspirational Peers	6.4M	51,587	67,303	1,799,042	1,682,389	\$839



Research Indicators - Fiscal Year 2003-04

IUPUI's total annual research expenditures for Fiscal Year 2003-04 were right at the mid-point of its peer group but its research expenditures per full-time faculty member (tenured and tenure track only) were slightly lower than average. No IUPUI-based researcher has yet appeared in the "highly cited researchers" ranks of the ISI Web of Knowledge (maintained by Thomson Scientific), while most of its peers have at least one and average five. The aspirational institutions are far higher on these research indicators, averaging double the expenditures per faculty member and between 30 and 50 highly cited researchers. However, the proportion of revenues from grants and contracts is not much higher among the aspirational institutions than among IUPUI and its peers.

	Total Research Expenditures	Percent Revenue from Grants and Contracts	Research Expenditures per FT Ten./Track Faculty	Highly Cited Researchs (ISI)
Indiana University Purdue University Indianapolis	\$145M	27%	\$112K	0
Rank among 12 Peers & IUPUI	(7)	(8)	(9)	(13)
Average of 12 Peers & IUPUI	150M	29%	128K	5
Peer Institutions				
Temple University	\$64M	12%	\$63K	4
University at Buffalo - SUNY	111M	24%	99K	3
University of Alabama at Birmingham	233M	33%	195K	5
University of Cincinnati-Main Campus	132M	21%	101K	1
Univ. of Colorado at Denver & Health Sci Center	177M	51%	136K	6
University of Illinois at Chicago	212M	20%	161K	12
University of Louisville	100M	28%	98K	0
University of New Mexico-Main Campus	140M	32%	134K	2
University of South Florida	167M	36%	132K	4
University of Utah	200M	21%	150K	14
Virginia Commonwealth University	110M	27%	121K	6
Wayne State University	151M	37%	149K	1
20-Year Targets of Excellence Aspirational Institutions				
The Ohio State University	\$317M	27%	\$114K	28
University of California-Los Angeles	551M	32%	330K	53
University of Minnesota	410M	29%	168K	43
University of Washington-Seattle	553M	44%	315K	48
Average of Aspirational Peers	\$458M	33%	\$232K	43



Resource Indicators - Fiscal Year 2003-04

IUPUI's operating budget is at the mid-range of its peer group although about half the size of the aspirational group. When adjusted for enrollment (FTE), IUPUI falls slightly above the midrange, although there is great variability among these institutions as is typical when medical programs are included (with varying degrees to which medical operations are supported through the operational budget, although hospital revenues and expenditures are excluded from these figures). IUPUI is high among its peers in tuition and fee revenues as a percentage of tuition and fees plus state appropriation. This indicates that IUPUI relies more on tuition and fees relative to state appropriations than the majority of its peers, although four peers are at least as dependent or more so than IUPUI. IUPUI is typical of its peers and aspirational institutions regarding the percent of its expenditures on mission critical activities, instruction, research, and service, as opposed to administrative and support service costs. IUPUI is also relatively high among its peers on the percent of alumni who make donations, but virtually all peers are lower on this measure than the aspirational institutions.

	Operating Expenditures	Oper. Exp Per FTE	T&F / T&F +State App	Pct Exp on Inst/Res/Srv	Pct Exp on Wages/Benefits	Alumni Giving Rate
Indiana University Purdue University Indianapolis	\$838M	\$40,156	42%	58%	69%	9%
Rank among 12 Peers & IUPUI	(4)	(5)	(5)	(7)	(4)	(4)
Average of 12 Peers & IUPUI	\$805M	\$39,159	38%	59%	67%	8%
Peer Institutions						
Temple University	\$772M	\$28,485	67%	58%	63%	9%
University at Buffalo - SUNY	681M	29,344	29%	50%	71%	10%
University of Alabama at Birmingham	952M	67,971	22%	65%	59%	7%
University of Cincinnati-Main Campus	757M	31,546	48%	53%	67%	8%
Univ. of Colorado at Denver & Health Sci Center	566M	45,975	50%	72%	67%	4%
University of Illinois at Chicago	1,434M	64,342	38%	44%	74%	5%
University of Louisville	554M	35,653	36%	60%	66%	9%
University of New Mexico-Main Campus	772M	38,510	22%	66%	65%	9%
University of South Florida	742M	22,067	28%	55%	69%	5%
University of Utah	1,249M	48,550	34%	58%	64%	11%
Virginia Commonwealth University	497M	24,792	44%	63%	68%	10%
Wayne State University	689M	32,670	36%	62%	71%	8%
20-Year Targets of Excellence Aspirational Institutions						
The Ohio State University	\$1,659M	\$33,158	50%	59%	72%	15%
University of California-Los Angeles	2,316M	64,295	31%	61%	72%	16%
University of Minnesota	1,901M	45,630	40%	56%	70%	11%
University of Washington-Seattle	1,928M	53,020	50%	60%	72%	16%
Average of Aspirational Peers	\$1,951M	\$49,026	43%	59%	72%	15%

