



Michele J. Hansen, Ph.D., Assistant Vice Chancellor, Institutional Research
and Decision Support

IUPUI Peer Institutions

Overview

1. Why important?
2. Who are they?
3. How selected?
4. How do we compare?
5. What institutions could be considered as aspirational peers?



Why Identify Peers?

1. Benchmark against
2. Basis of comparison
3. Setting goals and aspirations



Official Peers – Approved by Board of Trustees April 6, 2006

1. Temple University (Philadelphia, PA)
2. University at Buffalo (Buffalo, NY)
3. University of Alabama at Birmingham (Birmingham, AL)
4. University of Cincinnati - Main Campus (Cincinnati, OH)
5. University of Colorado Denver/Anschutz Medical Campus (Denver, CO)
6. University of Illinois at Chicago (Chicago, IL)
7. University of Louisville (Louisville, KY)
8. University of New Mexico - Main Campus (Albuquerque, NM)
9. University of South Florida - Main Campus (Tampa, FL)
10. University of Utah (Salt Lake City, UT)
11. Virginia Commonwealth University (Richmond, VA)
12. Wayne State University (Detroit, MI)



IUPUI

FULFILLING *the* PROMISE

*Can be found on IRDS website with links to institutions
<https://irds.iupui.edu/>

Process Used to Identify

1. Presented to the Board of Trustees – April 7, 2006
2. In 2006 Peer institutions for IUPUI were selected through a series of analyses and discussions between the IUPUI Chancellor's Cabinet and the Associate Vice President for University Planning, Institutional Research, and Accountability (at the time Victor Borden).
3. Part of IU Mission Differentiation Project



Methods Used to Identify

1. The modeling analysis employed a hybrid threshold/distance methodology, wherein the target institution (IUPUI) was compared to all other institutions in the selection pool across a varied set of measures.
2. For each measure, ranges were defined according to the distribution of institutions around the IUPUI value. Percentile ranges were used to determine the cutoff points. Institutions within a 10 percentile range (+/- 5 percentile) were deemed most similar and assigned zero points. Institutions beyond percentile range but within 25 (+/- 12.5) percentile points were assigned 1 point. Point values increased for institutions less similar, from 3 to 10 to 25 for the next three concentric percentile ranges. The distance of an institution from IUPUI was determined by summing the assigned points across all measures.
3. The interactive model also allowed the user to weight any or all measures from zero (not included in the analysis) to an unlimited upper range. Various combinations were provided as examples.
4. The model also accommodated setting aspirational values for any or all of the measures. Peer listings generated using the aspirational values illustrated institutions that are closest to the aspirational profile thus created.



Methods and Selection Criteria

Considerations (based on 2003, 2004 and 2005 data primarily from the Integrated Postsecondary Education Data System -IPEDS)

- **Fall Enrollments:** Undergrad, Grad/Professional, Course Load (PT, FT)
- **Student Profile Characteristics:** Gender, Race/Ethnicity/Citizenship Status, State Residency, FT Undergrad Age
- **Undergraduate Admissions:**-Matriculation, Avg SAT/ACT, Freshmen Top 10%, % Trad Cohort
- **First-Time Undergraduate Student Charges:** In-State and Out-of-State Tuition and Fees
- **First-Time, First-Year Undergraduate Student Aid:** Federal Aid and Institutional Aid
- **Student Progress and Achievement:** One-Year Retention, Six-Year Grad Rate, National Merit Scholars, Student Fullbrights
- **Class Size:** % less than 30 and % 100+ students
- **Degrees Conferred by Level:** Associate, Bachelor's, Master's, First Prof., Doctoral
- **Degrees Conferred:** By Program Area
- **Faculty Profile:** Total, % Medical, % Tenure Track, % Female, Percent Minority, % Underrepresented Minority, Avg. Full Professor Salary, Avg. Assistant Professor Salary.
- **Faculty Awards and Recognitions:** Current active members in the National Academies, which includes the National Academy of Sciences, the National Academy of Engineering, and the Institute of Medicine; National Academy of Public Administration, American Council of Learned Societies, Fulbright Fellowships, Guggenheim recipients.
- **U.S. News & World Report Rankings:** Total ranked graduate and undergraduate programs, and those in Top 10 and Top 25.
- **Library Comparisons:** Library Holdings, Current Serials, Gate Count per week, Expenditures for Electronic Materials, Total Library Expenditures Per FTE
- **Research Indicators:** Total Expenditures, % Revenue from Grants and Contacts, Research Expenditures per FT Tenure-Track Faculty, Highly Cited (ISI)
- **Resource Indicators:** Operating Expenditures, Oper Exp. Per FTE, Tuition and Fees + State Appropriations, Alumni Giving Rate, % Exp on Instruction, Research, and Service, % Exp on Administrative and Support Service.





Methods and Selection Criteria

Based on the initial analyses and a face-to-face simulation meeting, the Chancellor and his staff selected a set of 12 institutions as a core peer group. In addition, they identified an aspirational reference group to monitor “20-year targets of excellence.”

1. The Ohio State University
2. University of California-Los Angeles
3. University of Minnesota
4. University of Washington-Seattle

Other Peers for Consideration – Urban Peers not Already on List of Official

Institution	Total Enrollment	Undergrad Enrollment	Percent of Undergrad - African American	Percent of Undergrad – Latinx	Percent of FT, FT -Pell	FT/FT One Year Retention 2015 Cohort	Six-Year Graduation – 2010 Cohort
IUPUI	29,804	21,748	10%	7%	41%	74%	46%
Cleveland State	16,864	12,352	17%	5%	46%	71%	41%
Georgia State	32,237	25,228	42%	10%	57%	83%	53%
Portland State	26,627	21,071	4%	12%	42%	74%	48%
UMass-Boston	16,847	12,847	16%	14%	46%	79%	45%
University of Memphis	21,301	17,183	36%	5%	49%	80%	42%
University of Missouri – Kansas City	16,936	11,704	12%	8%	36%	75%	49%
University of Missouri - St. Louis	16,989	13,898	15%	3%	47%	79%	53%
University of New Orleans	8,037	6,442	16%	12%	50%	64%	36%
University of Pittsburgh	28,664	19,123	5%	3%	13%	92%	81%
University of Wisconsin - Milwaukee	25,601	20,968	8%	10%	36%	72%	40%



How do we
compare
today?



Fall 2015 Comparisons

Note: All are Large, Urban Public

Institution	Headcount	Selectivity	Urbanization	Avg. SAT /ACT
IUPUI	3604	3	City Large	1015
Temple U (PA)	4892	1	City Large	1135
U at Buffalo, SUNY (NY)	3607	1	Suburb Large	1162
U of Alabama-Birmingham (AL)	1590	1	City Midsize	26
U of Colorado Denver (CO)	1278	2	City Large	25
U of Illinois-Chicago (IL)	3462	2	City Large	23.3
U of Louisville (KY)	2735	1	Suburb Large	24
U of New Mexico (NM)	3289	2	City Large	25.5
U of Utah (UT)	3086	1	City Midsize	22.5
Virginia Commonwealth U (VA)	4061	2	City Midsize	1100
Wayne State U (MI)	2320	2	City Large	23.1



Fall 2015 Comparisons

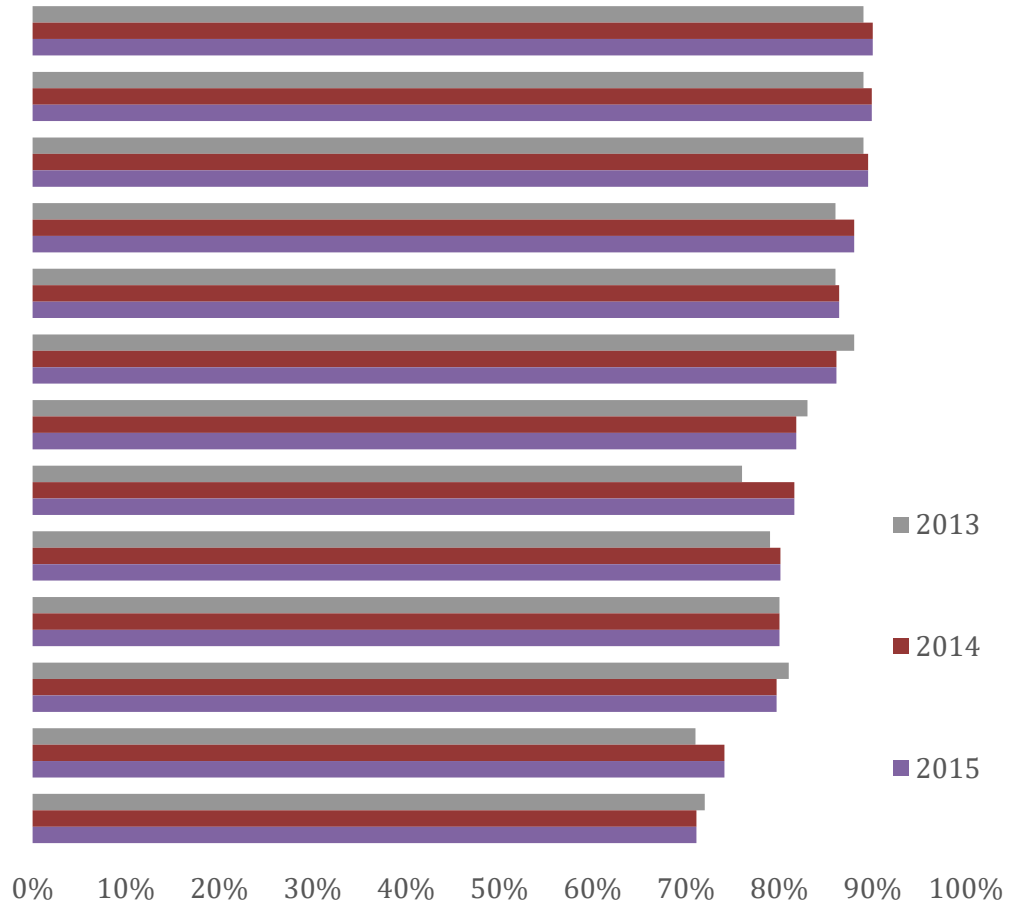
Note: All are Large, Urban Public

Institution	Federal Pell Grants	Under Rep. Minorities	24yrs or older	Campus Housing	First Fall GPA Below 2.0	Fall-Spring Retn Rate
IUPUI	42%	15%	1%	37%	20%	88%
Temple U (PA)	28%	19%	0%	78%	9%	95%
U at Buffalo, SUNY (NY)	35%	14%	0%	78%	15%	95%
U of Alabama-Birmingham (AL)	34%	26%	1%	71%	12%	93%
U of Colorado Denver (CO)	38%	34%	1%		24%	87%
U of Illinois-Chicago (IL)	58%	43%	0%	37%	18%	91%
U of Louisville (KY)	31%	13%	0%	74%	16%	93%
U of New Mexico (NM)	41%	57%	0%	23%	10%	91%
U of Utah (UT)	29%	15%	0%	45%	12%	93%
Virginia Commonwealth U (VA)	32%	28%	0%	82%	14%	94%
Wayne State U (MI)	48%	22%	0%	38%	17%	93%



Retention Rates (Fall to Fall)

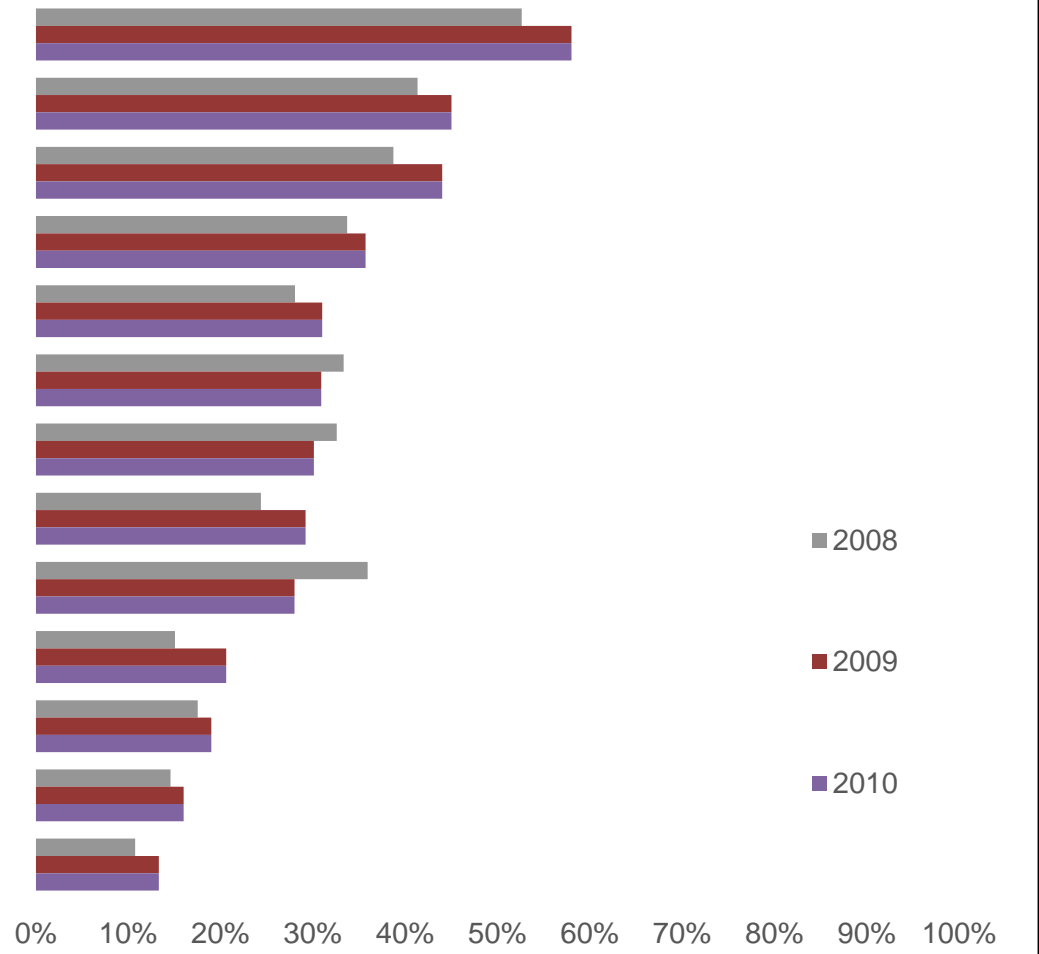
Peer Institutions	Cohort Year		
	2013	2014	2015
U. of South Florida-Main Campus	89%	88%	90%
U. of Utah	89%	89%	90%
Temple U.	89%	90%	90%
U. of Cincinnati-Main Campus	86%	88%	88%
Virginia Commonwealth U.	86%	86%	86%
U. at Buffalo	88%	88%	86%
U. of Alabama at Birmingham	83%	79%	82%
Wayne State U.	76%	77%	82%
U. of New Mexico-Main Campus	79%	80%	80%
U. of Illinois at Chicago	80%	81%	80%
U. of Louisville	81%	79%	80%
Indiana U.-Purdue U.-Indianapolis	71%	74%	74%
U. of Colorado Denver	72%	68%	71%



4 Year Graduation Rates

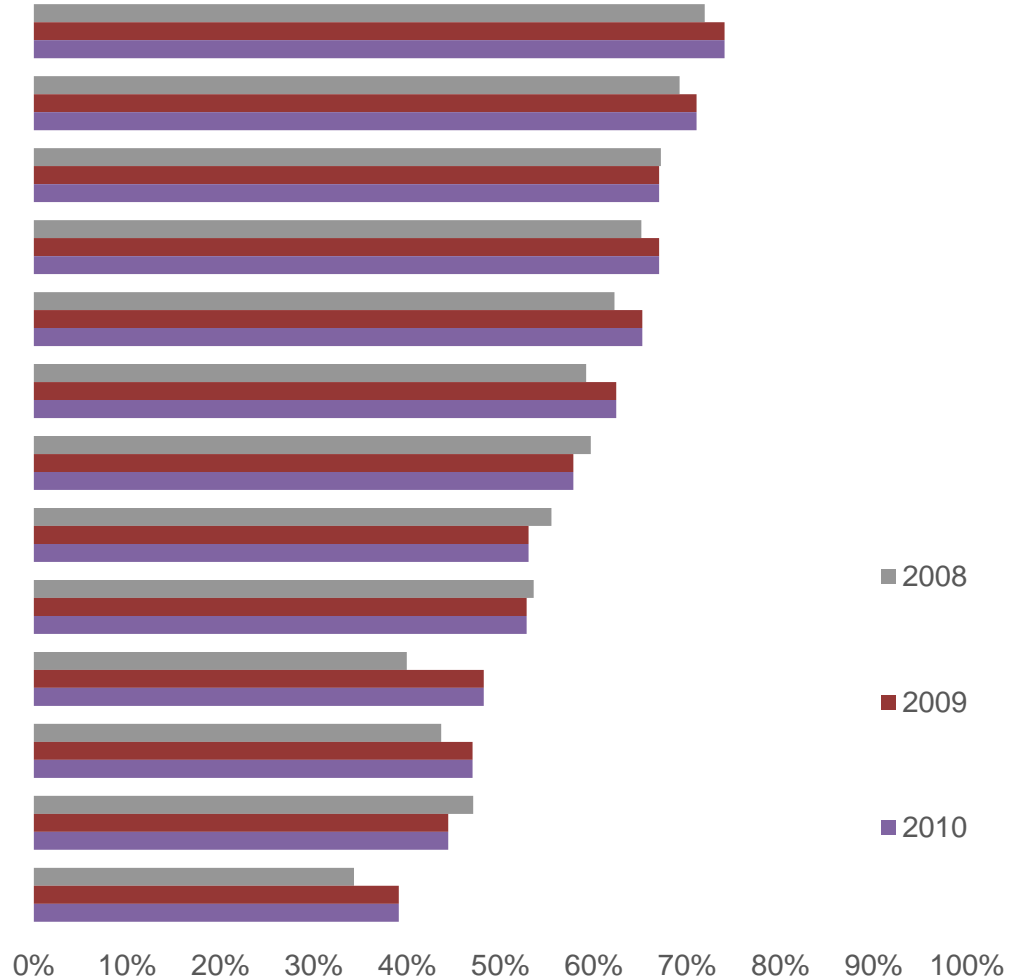
Peer Institutions	Cohort Year		
	2008	2009	2010

U. at Buffalo	53%	55%	58%
Temple U.	41%	43%	45%
U. of South Florida	39%	43%	44%
Virginia Commonwealth U.	34%	37%	36%
U. of Cincinnati-Main Campus	28%	28%	31%
U. of Illinois at Chicago	33%	34%	31%
U. of Alabama at Birmingham	33%	32%	30%
U. of Utah	24%	28%	29%
U. of Louisville	36%	25%	28%
U. of Colorado Denver	15%	17%	21%
Indiana U.-Purdue U.-Indianapolis	18%	19%	19%
U. of New Mexico-Main Campus	15%	15%	16%
Wayne State U.	11%	11%	13%



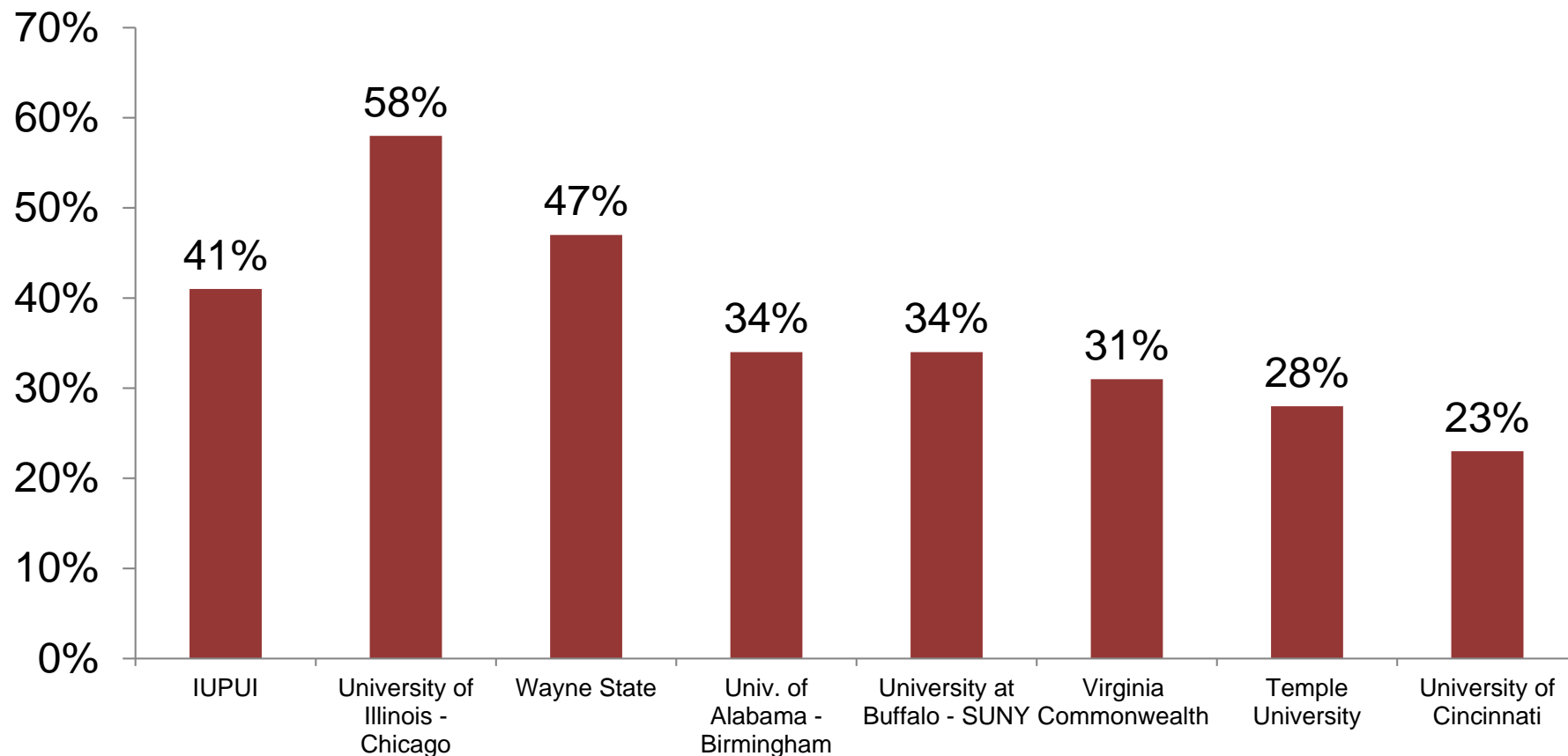
6 Year Graduation Rates

Peer Institutions	Cohort Year		
	2008	2009	2010
U. at Buffalo	72%	74%	74%
Temple U.	69%	71%	71%
U. of South Florida-Main Campus	67%	68%	67%
U. of Cincinnati-Main Campus	65%	65%	67%
U. of Utah	62%	64%	65%
Virginia Commonwealth U.	59%	62%	62%
U. of Illinois at Chicago	60%	60%	58%
U. of Alabama at Birmingham	55%	55%	53%
U. of Louisville	54%	53%	53%
U. of Colorado Denver	40%	46%	48%
Indiana U.-Purdue U.-Indianapolis	44%	45%	47%
U. of New Mexico-Main Campus	47%	47%	44%
Wayne State U.	34%	35%	39%



Difference Between IUPUI Peers Pell Grant Recipients

% First Year Students Receiving Federal Pell Grant 2015-2016



Institutional Aid and Scholarships

- ❖ In 2014-2015, we ranked 11th out of 13 peers (ahead of only University of Colorado Denver/Anschutz Medical Campus and Virginia Commonwealth University).
- ❖ In 2015-2016 we ranked second to last (ahead of only University of Colorado Denver/Anschutz Medical Campus)



Based on The Integrated Postsecondary Education Data System (IPEDS)



National Survey of Student Engagement

Administered Spring 2015 FY and Seniors

About 560 colleges and universities participate in NSSE each year.

Over 1,600 have participated since 2000.

Official Peers (N=8)

University at Buffalo, State University of New York (Buffalo, NY)

University of Alabama at Birmingham (Birmingham, AL)

University of Cincinnati (Cincinnati, OH)

University of Illinois at Chicago (Chicago, IL)

University of Louisville (Louisville, KY)

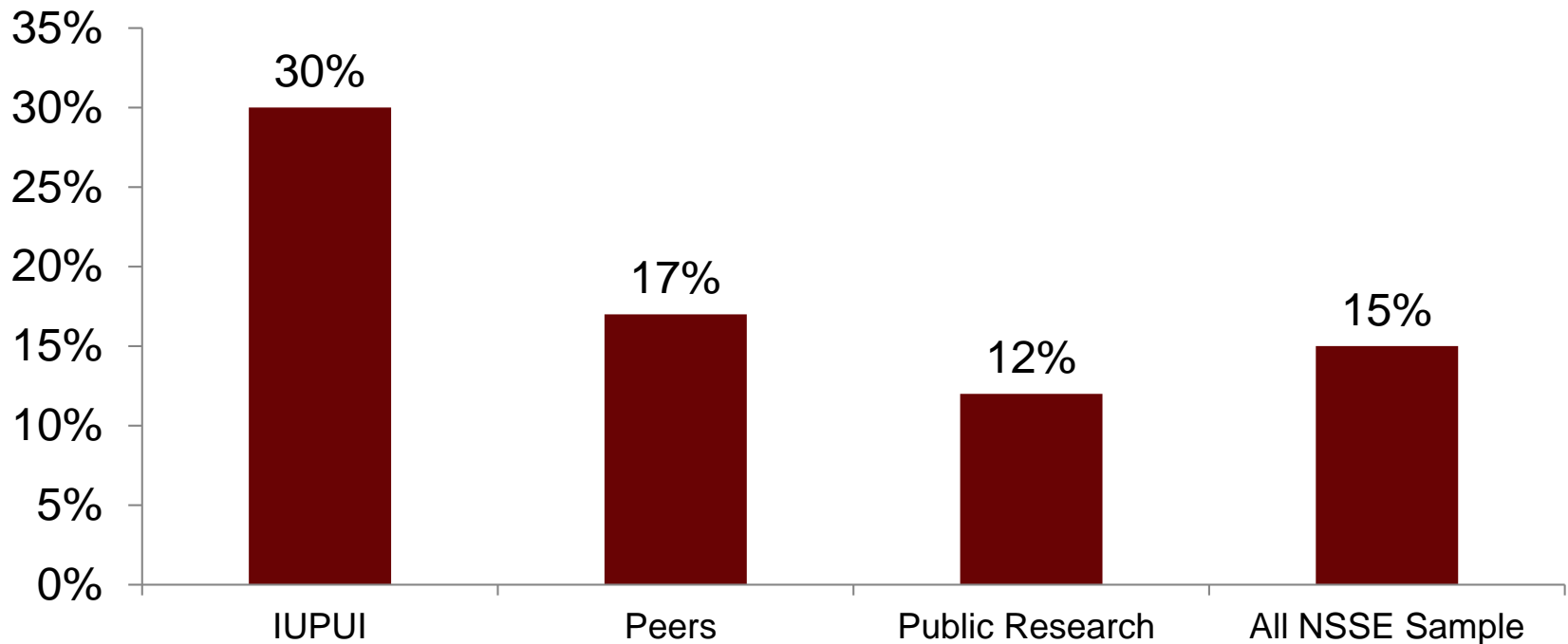
University of South Florida (Tampa, FL)

Virginia Commonwealth University (Richmond, VA)

Wayne State University (Detroit, MI)

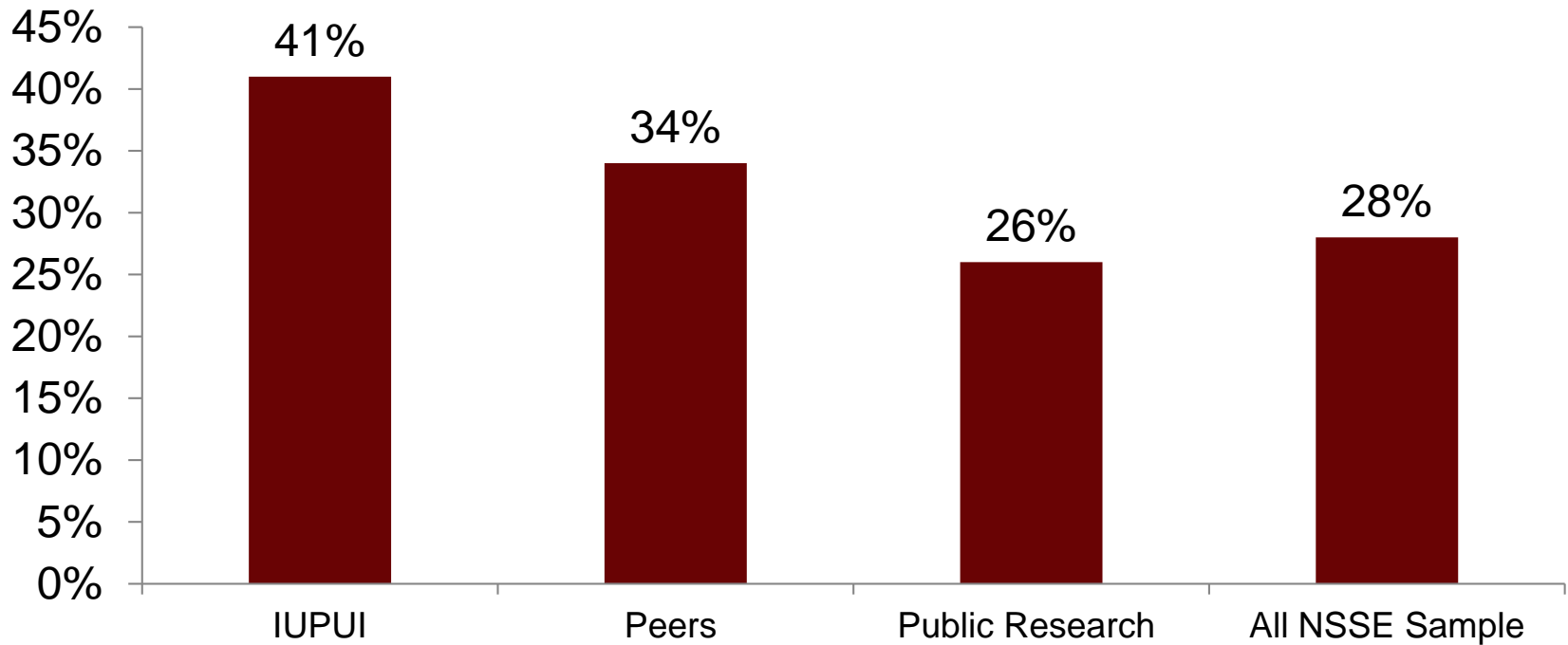
Time Spent Working for Pay Off Campus

Working For Pay 16 or More Hours Per Week First Year Students



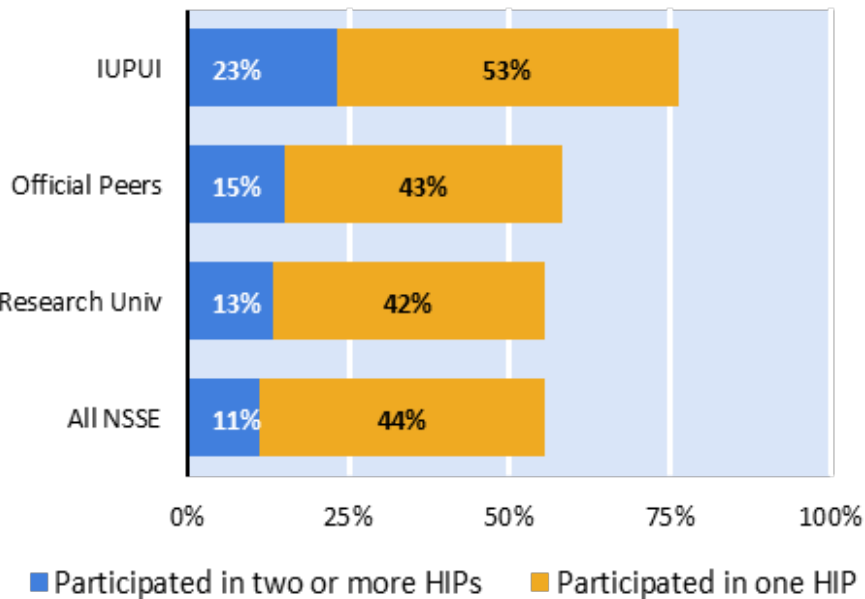
Time Spent Working for Pay Off Campus

Working For Pay More than 20 Hours Per Week Seniors

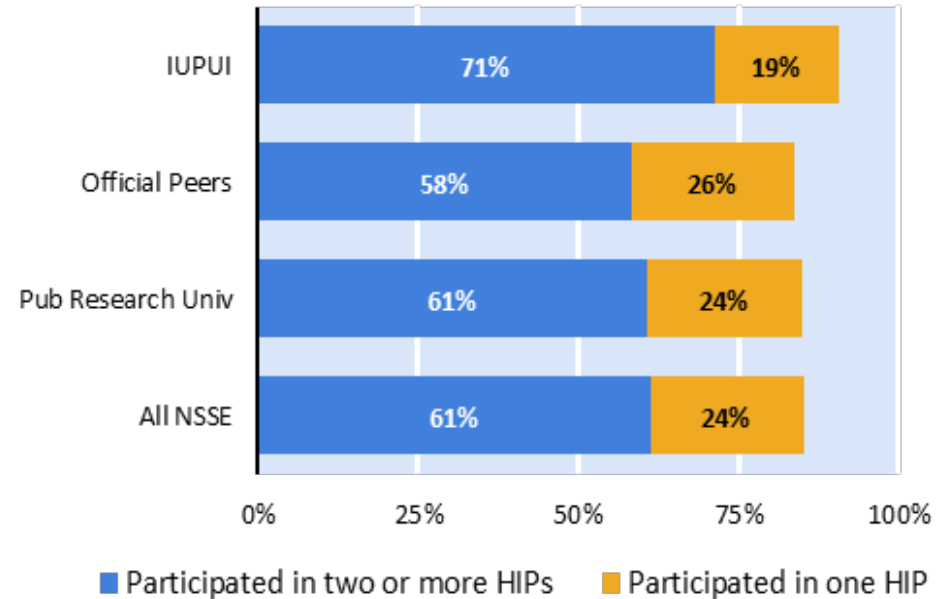


High Impact Practices

First-Year Students



Seniors



- IUPUI students significantly more likely to participate in learning communities, service learning, internships or field experience, and capstones.
- IUPUI students less likely to participate in study abroad.
- Similar levels of participation in undergraduate research.



First Year Students

Strengths

- Participation In High- Impact Practices
- Quality Interactions With Faculty
- Talked About Career Plans With A Faculty Member
- Instructors Clearly Explained Course Goals And Requirements
- Writing And Speaking Clearly And Effectively
- Thinking Critically And Analytically
- Acquiring Job- Or Work-related Knowledge And Skills
- Working Effectively With Others
- Developing Or Clarifying A Personal Code Of Values And Ethics
- Institution Emphasizes:
 - Spending significant amount of time engaged in academic work
 - Providing support to help students succeed academically
 - Using learning support services (tutoring services, writing center, etc.)

Areas of Concern

- Work More Hours Off-Campus for Pay
- Work Fewer Hours On-Campus
- Less likely to feel institution emphasizes:
 - Spending time attending campus events and activities
 - Providing support for well-being (recreation, health care, counseling, etc..).
- Lower Interactions with Diverse Peers (based on race/ethnicity, religion, economic backgrounds, political views)



Seniors

Strengths

- Participation in High- Impact Practices
- Quality Interactions with Faculty, Other Students, Advisors, Student Services Staff, and Administrative Offices
- Writing and Speaking Clearly and Effectively
- Acquiring Job- or Work-Related Knowledge and Skills
- Examining the Strengths and Weaknesses of your Own Views on a Topic or Issue
- Institution Emphasizes:
 - Providing support to help students succeed academically
 - Using learning support services (tutoring services, writing center, etc.)

Areas of Concern

- Work More Hours Off-Campus for Pay
- Work Fewer Hours On-Campus
- Spend more time Providing Care for Dependents
- Less likely to feel institution emphasizes:
 - Spending time attending campus events and activities
 - Providing support for well-being (recreation, health care, counseling, etc..).
- Fewer Interactions with Diverse Peers (based on race/ethnicity, religion)
- Lower time spent on Analysis of Numerical Information (evaluated and reached conclusion)



Contact Information

Michele J. Hansen, Ph.D.
Assistant Vice Chancellor
mjhansen@iupui.edu
317-278-2618

Institutional Research and Decision Support
irds.iupui.edu

[IUPUI Data Link](#)



Contact us with questions or requests for information!

